

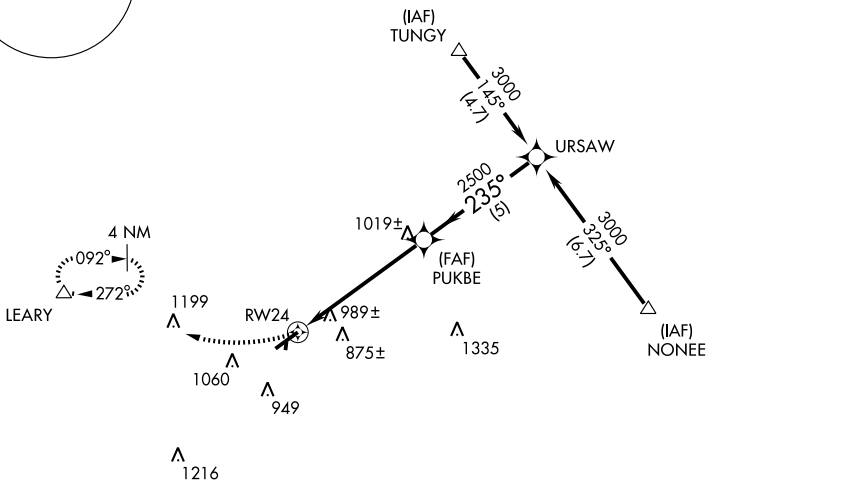
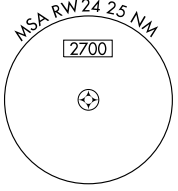
# GPS RWY 24

COLUMBIA/ MAURY COUNTY (M.R.C)

APP CRS <b>235°</b>	Rwy Idg <b>5999</b>
	TDZE <b>681</b>
	Apt Elev <b>681</b>

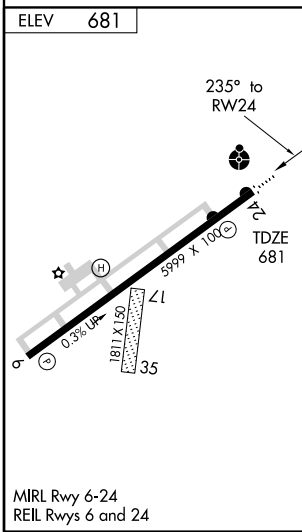
NA Inoperative table does not apply to Category C.	ODALS 	MISSED APPROACH: Climbing right turn to 3000 direct LEARY WP and hold.
--	-----------	--

AWOS-3 <b>128.625</b>	MEMPHIS CENTER <b>125.85 381.4</b>	UNICOM <b>122.8 (CTAF) 0</b>
--------------------------	---------------------------------------	---------------------------------



SE-1, 22 OCT 2009 to 19 NOV 2009

SE-1, 22 OCT 2009 to 19 NOV 2009



	VGS and descent angle not coincident.	URSAW	3000	
				Procedure Turn NA
RWY 24	PUKBE	URSAW	3000	
		2500	235°	
5.6 NM		5 NM	3.00° TCH 40	
CATEGORY	A	B	C	D
S-24	1240-3/4	559 (600-3/4)	1240-1 1/2 559 (600-1 1/2)	NA
CIRCLING	1300-1	619 (700-1)	1420-2 739 (800-2)	NA