

BUFFALO, WYOMING

AL-5705 (FAA)

VOR/DME RWY 31

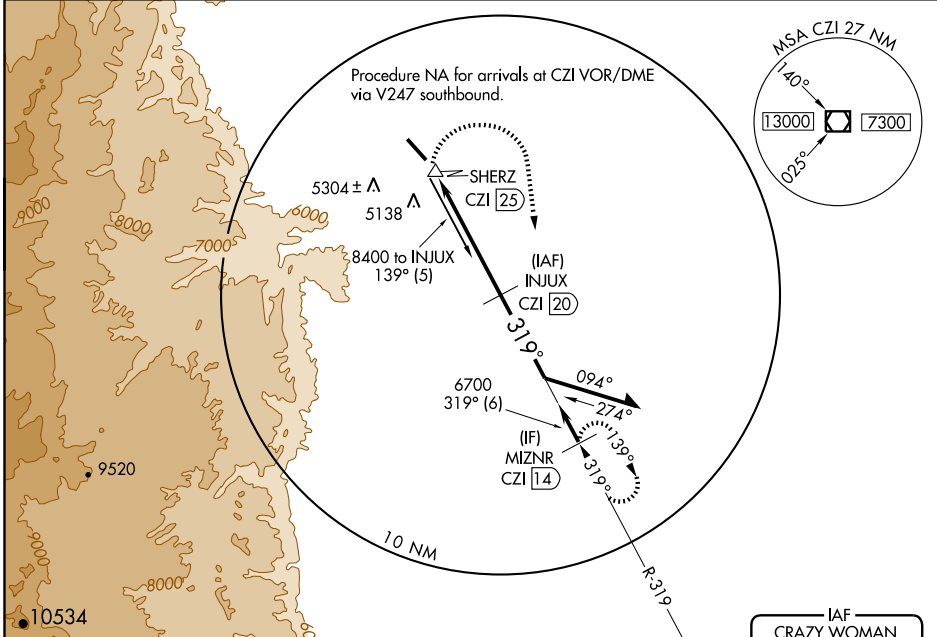
BUFFALO, JOHNSON COUNTY (BYG)

VOR/DME CZI 117.3 Chan 120	APP CRS 319°	Rwy Idg 6143 TDZE 4937 Apt Elev 4968
--	------------------------	---

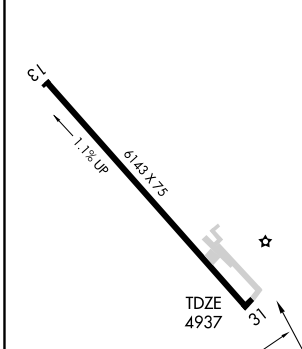
⚠ Visibility reduction by helicopters NA.
⚠ If local altimeter setting not received, use Sheridan altimeter setting and increase all MDAs 600 feet.
 When VGSi inoperative, procedure NA at night.

MISSED APPROACH: Climbing right turn to 7600 via heading 160° and CZI VOR/DME R-319 to MIZNR/14 DME and hold.

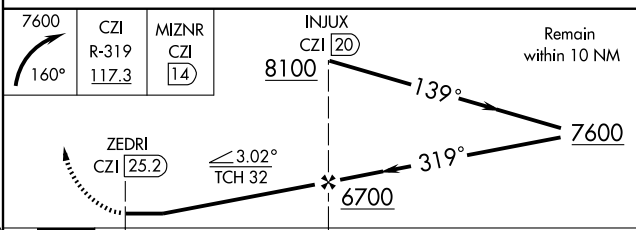
ASOS 135.425	CASPER RADIO 122.025	UNICOM 122.8 (CTAF) 0
------------------------	--------------------------------	---------------------------------



ELEV 4968



REIL Rwy 31 0	MIRL Rwy 13-31 0				
Knots	60	90	120	150	180
Min:Sec					



CATEGORY	A	B	C	D
S-31	5680-1 743 (800-1)	5680-1¼ 743 (800-1¼)	5680-2¼ 743 (800-2¼)	5680-2½ 743 (800-2½)
CIRCLING	5680-1 712 (800-1)	5680-1¼ 712 (800-1¼)	5680-2¼ 712 (800-2¼)	5680-2½ 712 (800-2½)

BUFFALO, WYOMING
Amdt 6 07074

44°23'N-106°43'W

BUFFALO, JOHNSON COUNTY (BYG) VOR/DME RWY 31

NW-1, 22 OCT 2009 to 19 NOV 2009

NW-1, 22 OCT 2009 to 19 NOV 2009