

RNAV (GPS) RWY 5

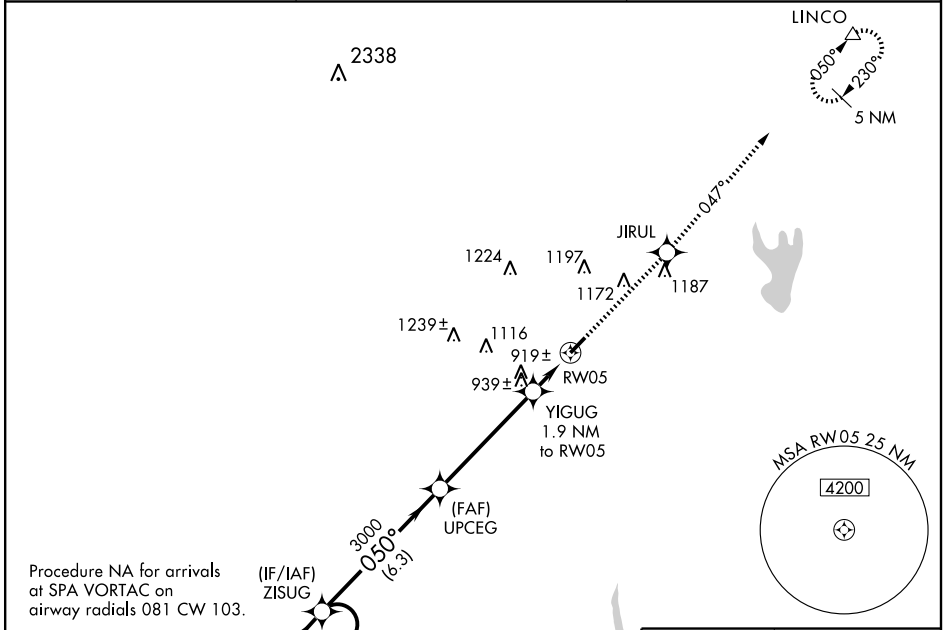
SHELBY - CLEVELAND COUNTY RGNL (EHO)

APP CRS	Rwy Idg	5002
050°	TDZE	847
	Apt Elev	847

▼ DME/DME RNP-0.3 NA. Visibility reduction by helicopters NA.
▲ When local altimeter setting not received use Charlotte altimeter setting and increase all MDA 100 feet and LNAV Cat. C and Circling Cat. D visibility ¼ mile and LNAV Cat. D visibility ½ mile.

MISSED APPROACH: Climb to 4000 direct JIRUL and via 047° track to LINCO and hold.

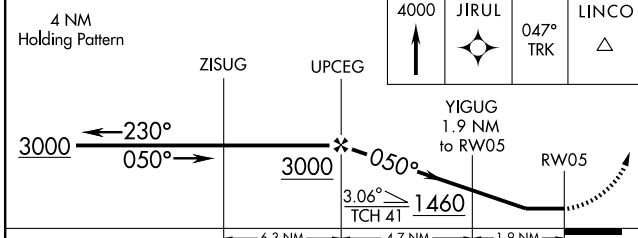
AWOS-3 118.425	CHARLOTTE APP CON 134.75 257.2	UNICOM 122.8 (CTAF) 0
--------------------------	--	---------------------------------



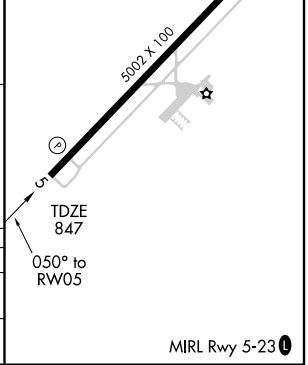
Procedure NA for arrivals at SPA VORTAC on airway radials 081 CW 103.

SE-2, 22 OCT 2009 to 19 NOV 2009

SE-2, 22 OCT 2009 to 19 NOV 2009



CATEGORY	A	B	C	D
LNAV MDA	1180-1 333 (400-1)			
CIRCLING	1240-1 393 (400-1)	1300-1 453 (500-1)	1300-1½ 453 (500-1½)	1480-2 633 (700-2)



MIRL Rwy 5-23 0