

NDB SLP	APP CRS	Rwy Idg	<b>5002</b>
<b>417</b>	<b>218°</b>	TDZE	<b>847</b>
		Apt Elev	<b>847</b>

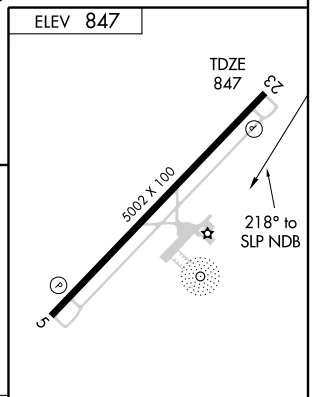
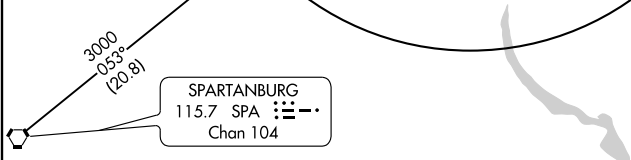
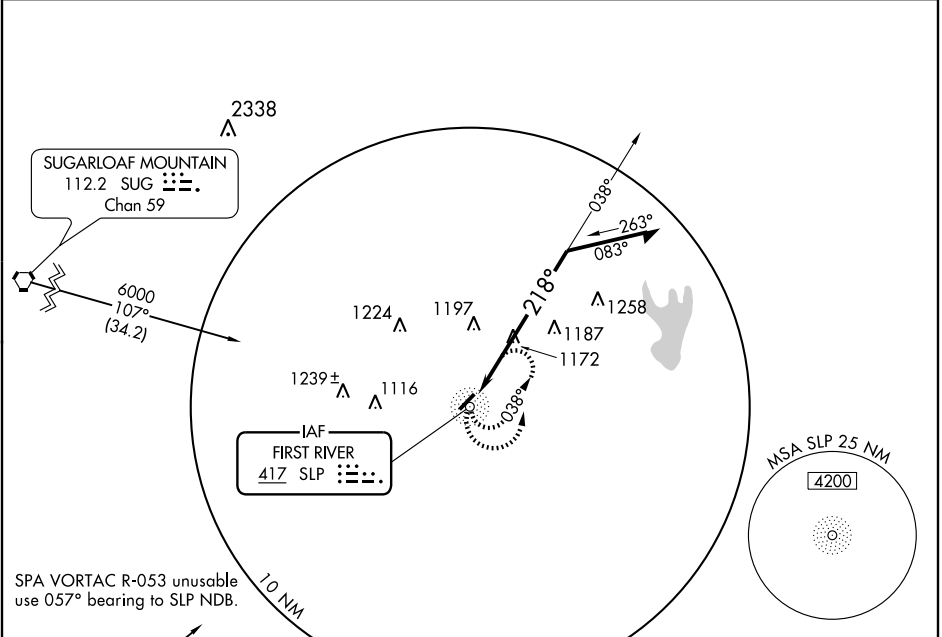
# NDB RWY 23

SHELBY - CLEVELAND COUNTY RGNL (EHO)

▼ Visibility reduction by helicopters NA. When local altimeter setting not received, use Charlotte altimeter setting and increase all MDA 100 feet and S-23 Cat. C and D visibility ¼ mile and Circling Cat. C and D visibility ¼ mile.

MISSED APPROACH: Climbing left turn to 3000 in SLP NDB holding pattern.

AWOS-3 <b>118.425</b>	CHARLOTTE APP CON <b>134.75 257.2</b>	UNICOM <b>122.8</b> (CTAF) <b>0</b>
--------------------------	--	--



CATEGORY	A	B	C	D
S-23	1620-1 773 (800-1)	1620-1¼ 773 (800-1¼)	1620-2¼ 773 (800-2¼)	1620-2½ 773 (800-2½)
CIRCLING	1620-1 773 (800-1)	1620-1¼ 773 (800-1¼)	1620-2¼ 773 (800-2¼)	1620-2½ 773 (800-2½)

MIRL Rwy 5-23 **0**

SE-2, 22 OCT 2009 to 19 NOV 2009

SE-2, 22 OCT 2009 to 19 NOV 2009