

LORAIN/ELYRIA, OHIO

AL-5703 (FAA)

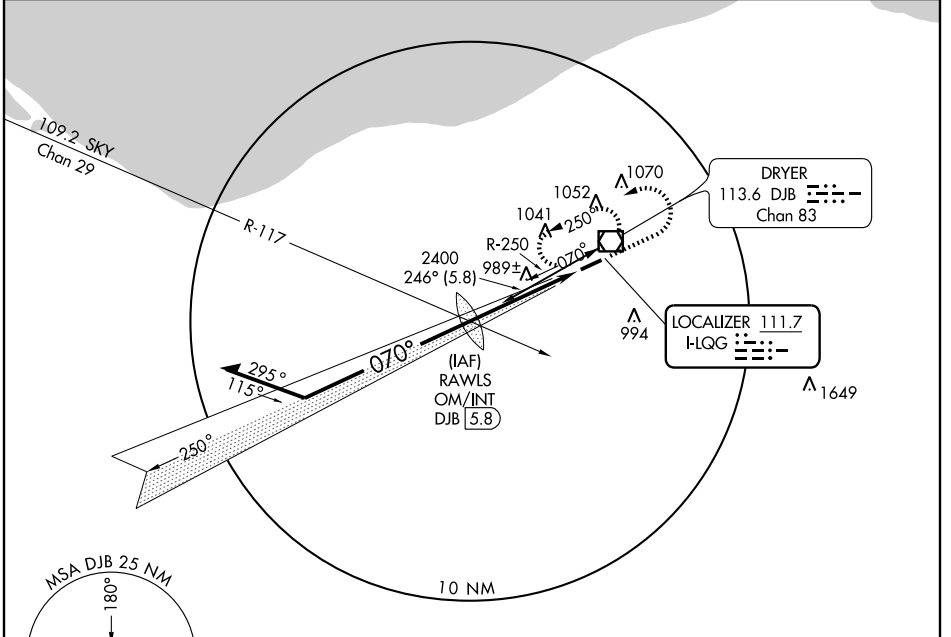
ILS or LOC RWY 7

LORAIN COUNTY RGNL (LPR)

LOC F-LQG 111.7	APP CRS 070°	Rwy Idg 5002
		TDZE 794
		Apt Elev 794

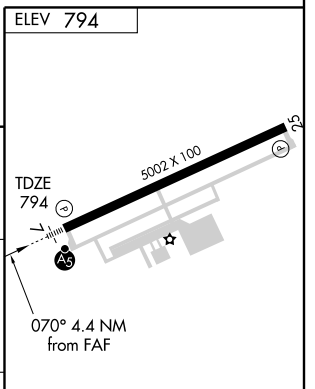
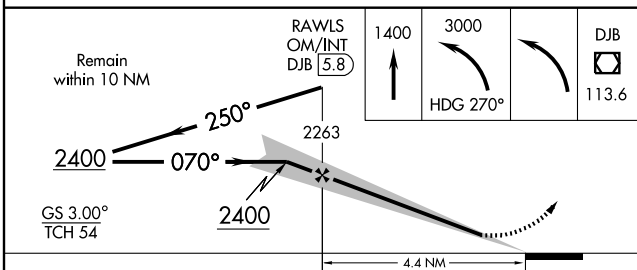
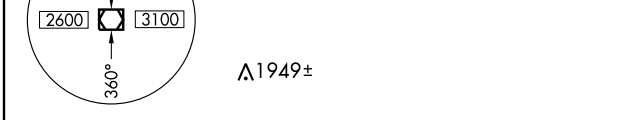
	MALS R	MISSED APPROACH: Climb to 1400, then climbing left turn to 3000 via heading 270° then left turn direct DJB VOR/DME and hold.

ASOS 121.425	CLEVELAND APP CON 126.35 354.025	CLNC DEL 125.7	UNICOM 122.7 (CTAF)
------------------------	--	--------------------------	-------------------------------



EC-2, 22 OCT 2009 to 19 NOV 2009

EC-2, 22 OCT 2009 to 19 NOV 2009



CATEGORY	A	B	C	D
S-ILS 7		994-1/2	200 (200-1/2)	
S-LOC 7	1240-1/2	446 (500-1/2)	1240-3/4 446 (500-3/4)	1240-1 446 (500-1)
CIRCLING	1240-1 446 (500-1)	1260-1 466 (500-1)	1260-1 1/2 466 (500-1 1/2)	1360-2 566 (600-2)

REIL Rwy 25	
HIRL Rwy 7-25	
FAF to MAP 4.4 NM	
Knots	60 90 120 150 180
Min:Sec	4:24 2:56 2:12 1:46 1:28

LORAIN/ELYRIA, OHIO
Amdt 6B 09183

41°21'N - 82°11'W

ILS or LOC RWY 7

LORAIN COUNTY RGNL (LPR)