

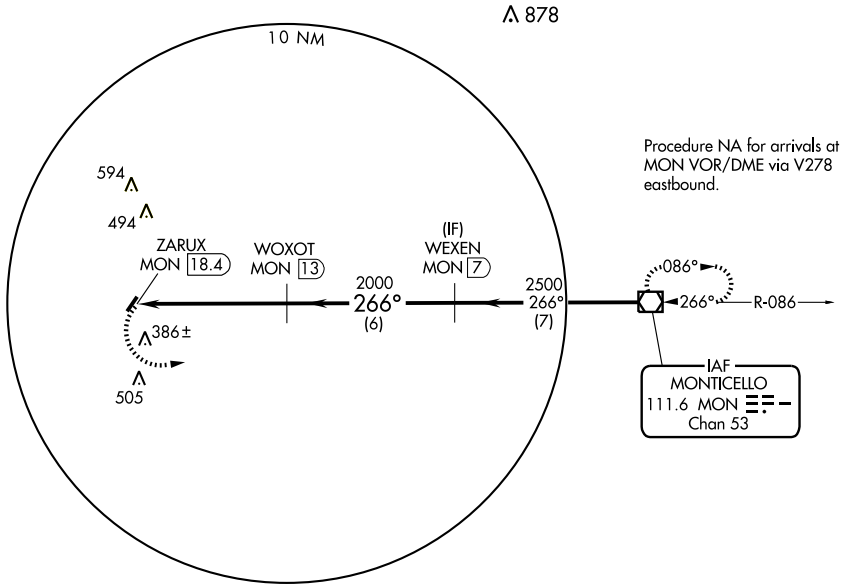
WARREN, ARKANSAS

AL-5700 (FAA)

VOR/DME MON <b>111.6</b> Chan <b>53</b>	APP CRS <b>266°</b>	Rwy Idg TDZE Apt Elev <b>235</b>	<b>N/A</b> <b>N/A</b> <b>235</b>
---	------------------------	---	--

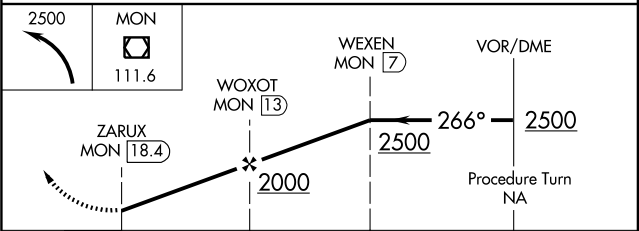
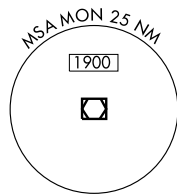
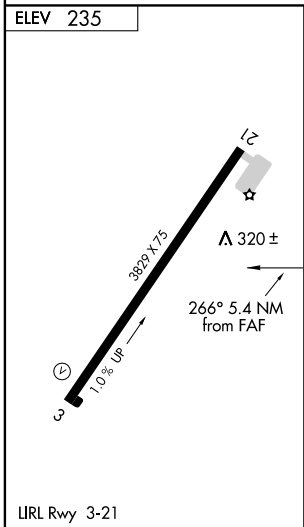
**VOR/DME-A**  
WARREN MUNI (3M9)

<b>▲ NA</b> Use Monticello altimeter setting, when not received, use El Dorado altimeter setting and increase all MDA 60 feet and Cat C visibility ¼ mile.	<b>MISSED APPROACH:</b> Climbing left turn to 2500 direct MON VOR/DME and hold.	
<b>MONTICELLO ASOS</b> <b>133,325</b>	<b>MEMPHIS CENTER</b> <b>135,875 269,35</b>	<b>CTAF</b> <b>122.9</b>



SC-1, 22 OCT 2009 to 19 NOV 2009

SC-1, 22 OCT 2009 to 19 NOV 2009



CATEGORY	A	B	C	D
CIRCLING	1000-1 765 (800-1)	1000-1¼ 765 (800-1¼)	1000-2¼ 765 (800-2¼)	NA

WARREN, ARKANSAS  
Amdt 5 09071

33°34'N-92°05'W

WARREN MUNI (3M9)  
**VOR/DME-A**