

# RNAV (GPS) RWY 3

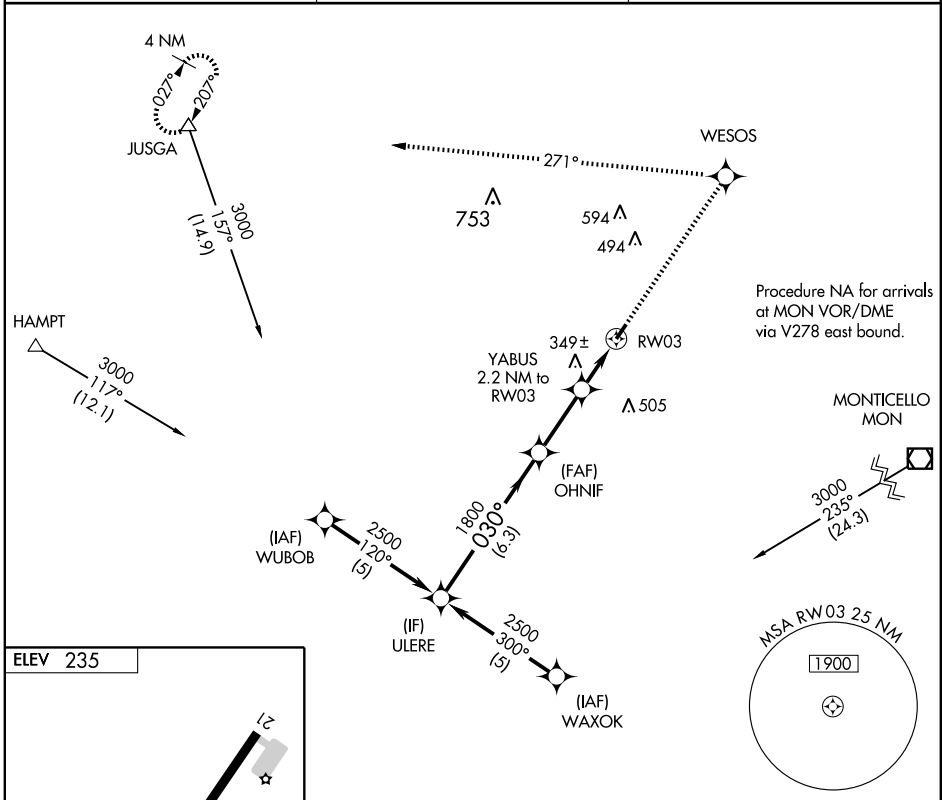
WARREN MUNI (3M9)

APP CRS <b>030°</b>	Rwy Idg <b>3829</b>
	TDZE <b>235</b>
	Apt Elev <b>235</b>

**▲ NA** DME/DME RNP-0.3 NA. Use Monticello altimeter setting; when not received, use El Dorado altimeter setting and increase all MDA 60 feet.

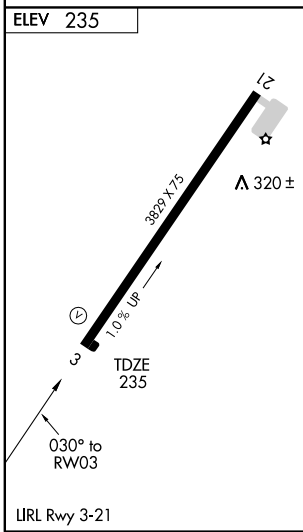
MISSED APPROACH: Climb to 3000 direct WESOS and left turn via 271° track to JUSGA and hold.

MONTICELLO ASOS <b>133.325</b>	MEMPHIS CENTER <b>135.875 269.35</b>	CTAF <b>122.9</b>
-----------------------------------	---	----------------------



SC-1, 22 OCT 2009 to 19 NOV 2009

SC-1, 22 OCT 2009 to 19 NOV 2009



Procedure Turn NA	ULERE	OHNIF	YABUS 2.2 NM to RW03	RW03
	2500	1800	920	
VGS1 and descent angles not coincident.		2.98° TCH 45		
6.3 NM		2.7 NM		2.2 NM
CATEGORY	A	B	C	D
LNAV MDA	660-1	425 (500-1)	660-1¼ 425 (500-1¼)	NA
CIRCLING	740-1	505 (600-1)	740-1½ 505 (600-1½)	NA