

RNAV (GPS) RWY 21

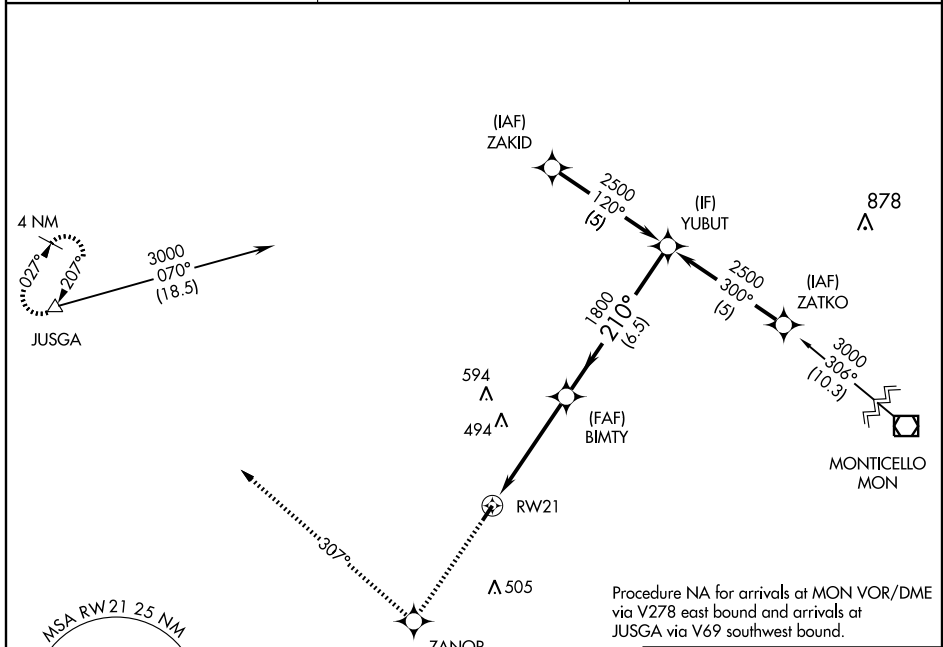
WARREN MUNI (3M9)

| | |
|------------------------|---|
| APP CRS 210° | Rwy Idg 3829 TDZE 235 Apt Elev 235 |
|------------------------|---|

NA DME/DME RNP-0.3 NA. Use Monticello altimeter setting, when not received, use El Dorado altimeter setting and increase all MDA 60 feet and LNAV Cat C visibility ¼.

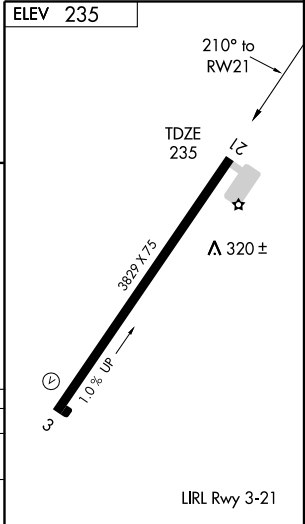
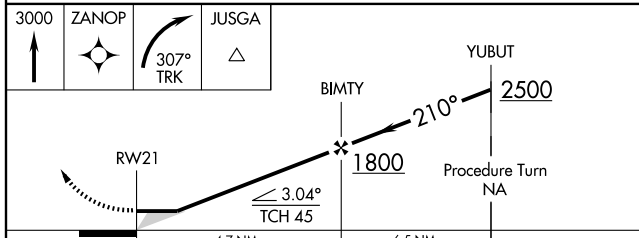
MISSED APPROACH: Climb to 3000 direct ZANOP and right turn via 307° track to JUSGA and hold.

| | | |
|-----------------------------------|---|----------------------|
| MONTICELLO ASOS 133.325 | MEMPHIS CENTER 135.875 269.35 | CTAF 122.9 |
|-----------------------------------|---|----------------------|



SC-1, 22 OCT 2009 to 19 NOV 2009

SC-1, 22 OCT 2009 to 19 NOV 2009



| CATEGORY | A | B | C | D |
|----------|-------|-------------|------------------------|----|
| LNAV MDA | 720-1 | 485 (500-1) | 720-1½ 485 (500-1¼) | NA |
| CIRCLING | 740-1 | 505 (600-1) | 740-1½ 505 (600-1½) | NA |