

RNAV (GPS) RWY 36

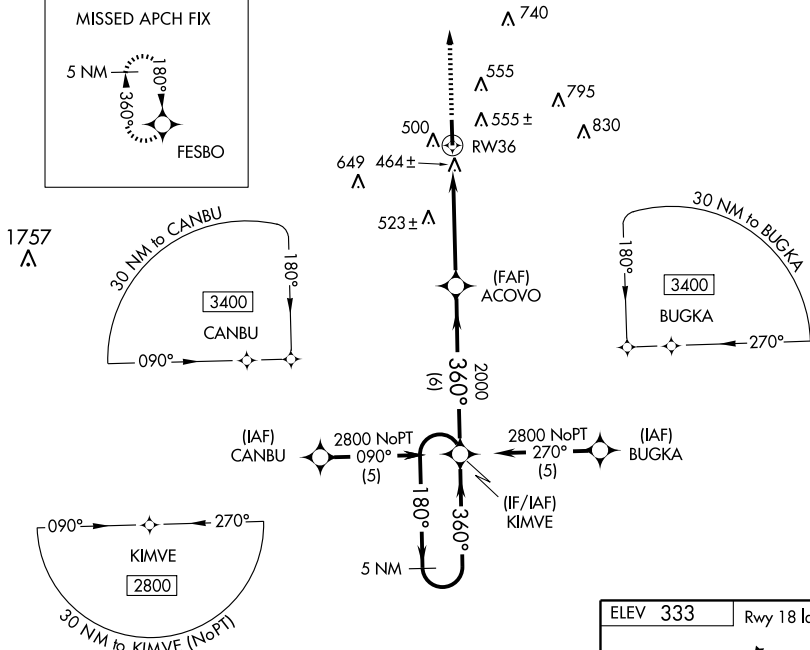
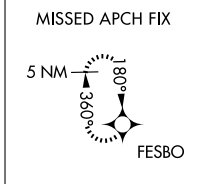
STARKVILLE/GEORGE M. BRYAN (STF)

WAAS CH 53604 W36A	APP CRS 360°	Rwy ldg 5550 TDZE 326 Apt Elev 333
--	------------------------	---

⚠ Baro-VNAV NA when using Golden Triangle Rgnl altimeter setting. If local altimeter setting not received, use Golden Triangle Rgnl altimeter setting and increase all DAs/MDAs 40 feet. For uncompensated Baro-VNAV systems, LNAV/VNAV NA below -15°C (5°F) or above 48°C (118°F). DME/DME RNP-0.3 NA. Visibility reduction by helicopters NA. VDP NA when using Golden Triangle Rgnl altimeter setting.

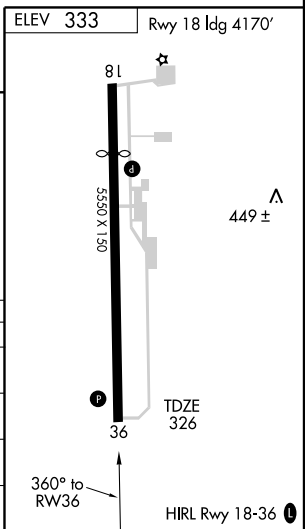
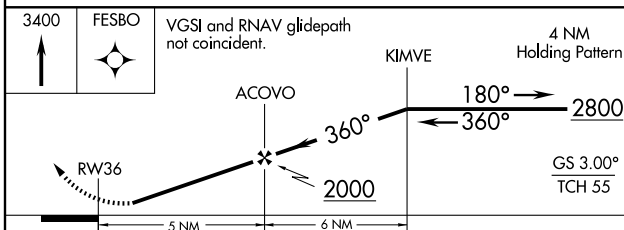
MISSED APPROACH: Climb to 3400 direct FESBO and hold, continue climb and hold to 3400.

AWOS-3 118.975	COLUMBUS APP CON ★ 135.6 323.275	CLNC DEL 126.25	UNICOM 122.7 (CTAF) ①
--------------------------	--	---------------------------	---------------------------------



SC-4, 22 OCT 2009 to 19 NOV 2009

SC-4, 22 OCT 2009 to 19 NOV 2009



CATEGORY	A	B	C	D
LPV DA	743-1½ 417 (500-1½)			
LNAV VNAV / DA	771-1½ 445 (500-1½)			
LNAV MDA	820-1 494 (500-1)	820-1 ¼ 494 (500-1¼)	820-1 ½ 494 (500-1½)	
CIRCLING	920-1 587 (600-1)	920-1 ½ 587 (600-1½)	920-2 587 (600-2)	