

RNAV (GPS) RWY 36

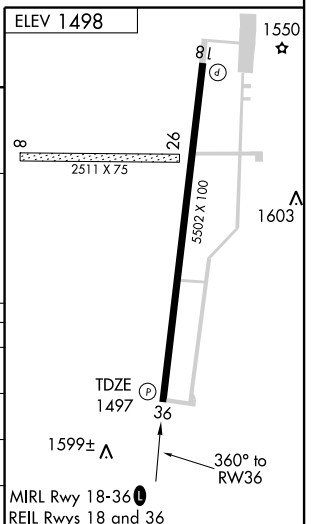
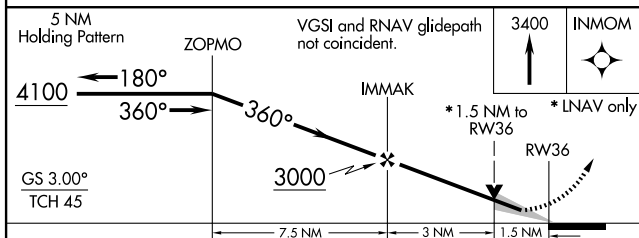
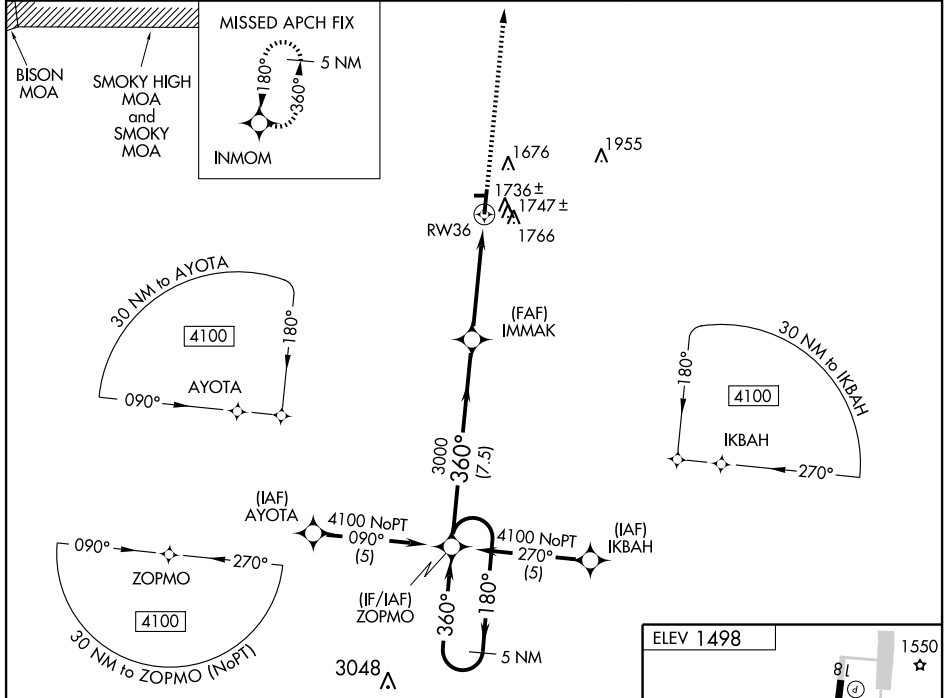
MC PHERSON (MPR)

WAAS CH 61205 W36A	APP CRS 360°	Rwy Idg 5502 TDZE 1497 Apt Elev 1498
--	------------------------	---

▼ If local altimeter setting not received, use Salina Muni altimeter setting and increase all DAs 91 feet and all MDAs 100 feet. For uncompensated Baro-VNAV systems, ▲ LNAV/VNAV NA below -17°C (2°F) or above 54°C (130°F). Baro-VNAV and VDP NA when using Salina Muni altimeter setting. DME/DME RNP-0.3 NA.

MISSED APPROACH: Climb to 3400 direct INMOM and hold.

AWOS-3 119.025	WICHITA APP CON 125.5 306.2	UNICOM 122.8 (CTAF) 0
--------------------------	---------------------------------------	---------------------------------



CATEGORY	A	B	C	D
LPV DA	1747-¾	250 (300-¾)		NA
LNAV/VNAV DA	1973-1¾	476 (500-1¾)		NA
LNAV MDA	2020-1	523 (600-1)	2020-1½ 523 (600-1½)	NA
CIRCLING	2080-1	582 (600-1)	2080-1½ 582 (600-1½)	NA

NC-2, 22 OCT 2009 to 19 NOV 2009

NC-2, 22 OCT 2009 to 19 NOV 2009