

# RNAV (GPS) RWY 21

LINCOLN/LOGAN COUNTY (AAA)

APP CRS	Rwy Idg	<b>3999</b>
<b>215°</b>	TDZE	<b>597</b>
	Apt Elev	<b>597</b>

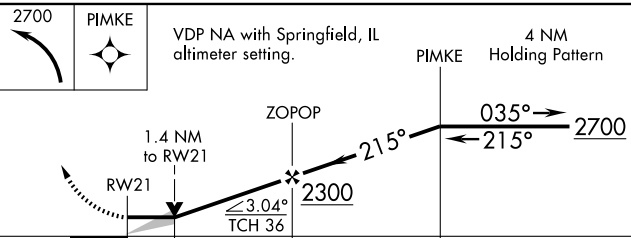
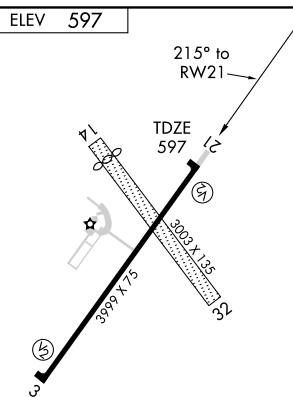
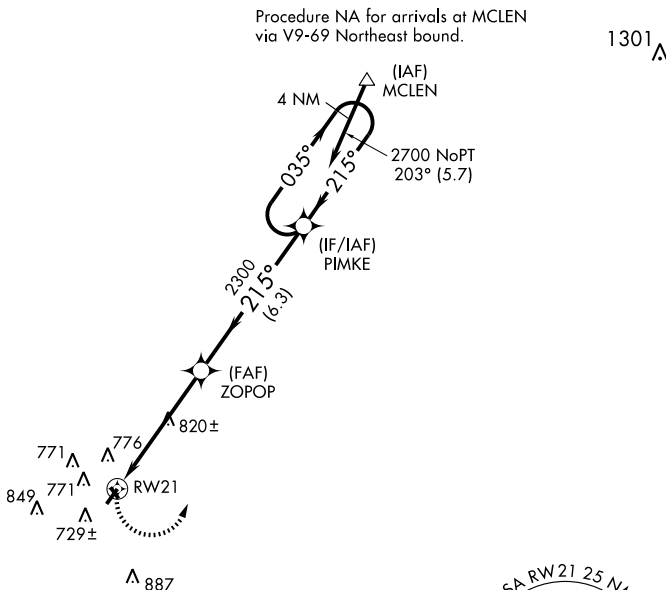
**⚠** DME/DME RNP-0.3 NA. Circling to Rwy 14/32 NA at night. If local altimeter setting not received, use Springfield, IL altimeter setting and increase all MDAs 60 feet.

**MISSED APPROACH:** Climbing left turn to 2700 direct PIMKE and hold.

AWOS-3  
**118.775**

SPRINGFIELD APP CON ★  
**118.6 323.0**

UNICOM  
**122.8 (CTAF) 0**



CATEGORY	A	B	C	D
LNAV MDA	1080-1	483 (500-1)	1080-1¼ 483 (500-1½)	1080-1½ 483 (500-1½)
CIRCLING	1140-1	543 (600-1)	1140-1½ 543 (600-1½)	1160-2 563 (600-2)

EC-3, 22 OCT 2009 to 19 NOV 2009

EC-3, 22 OCT 2009 to 19 NOV 2009