

MONTICELLO, ARKANSAS

AL-5695 (FAA)

VOR-A

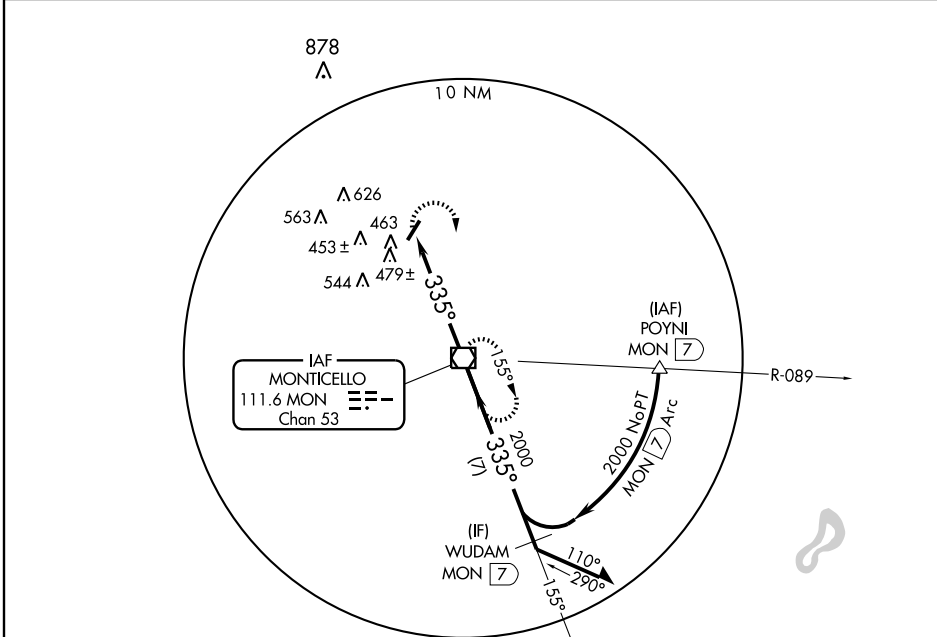
MONTICELLO MUNI/ELLIS FIELD (L1Q)

VOR/DME MON <b>111.6</b> Chan 53	APP CRS <b>335°</b>	Rwy ldg TDZE Apt Elev	<b>N/A</b> <b>N/A</b> <b>270</b>
--	------------------------	-----------------------------	--

**▼** When local altimeter setting not received, use Pine Bluff altimeter setting and increase all MDA 100 feet and  
**▲** Cat C visibility ¼ mile.

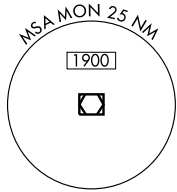
**MISSED APPROACH:** Climbing right turn to 2500 direct MON VOR/DME and hold. Continue climb in hold to 2500.

ASOS <b>133.325</b>	MEMPHIS CENTER <b>135.875 269.35</b>	UNICOM <b>122.8</b> (CTAF) <b>①</b>
------------------------	---	--



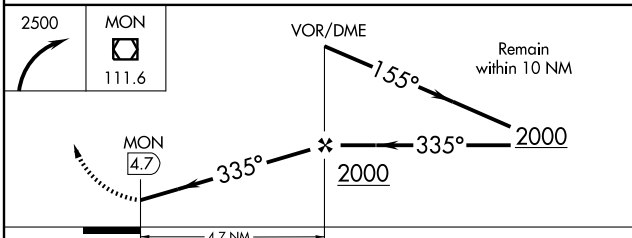
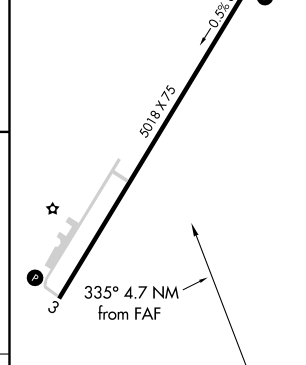
SC-1, 22 OCT 2009 to 19 NOV 2009

SC-1, 22 OCT 2009 to 19 NOV 2009



ELEV 270

REIL Rwy 3 and 21 **①**  
MIRL Rwy 3-21 **①**



CATEGORY	A	B	C	D	FAF to MAP 4.7 NM					
CIRCLING	800-1	530 (600-1)	800-1½ 530 (600-1½)	NA	Knots	60	90	120	150	180
					Min:Sec	4:42	3:08	2:21	1:53	1:34

MONTICELLO, ARKANSAS  
Amdt 6 08213

33° 38' N-91° 45' W

MONTICELLO MUNI/ELLIS FIELD (L1Q)

VOR-A