

RNAV (GPS) RWY 6

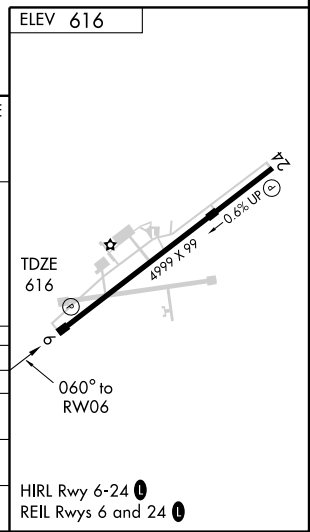
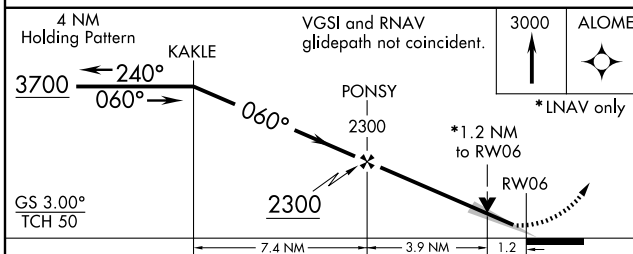
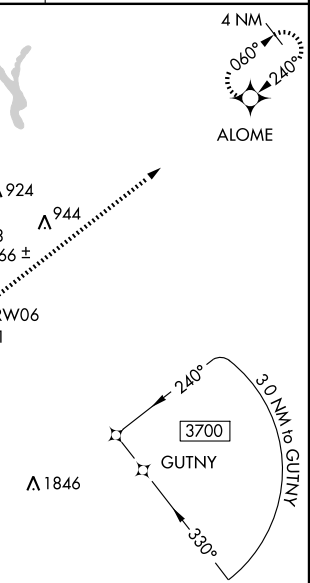
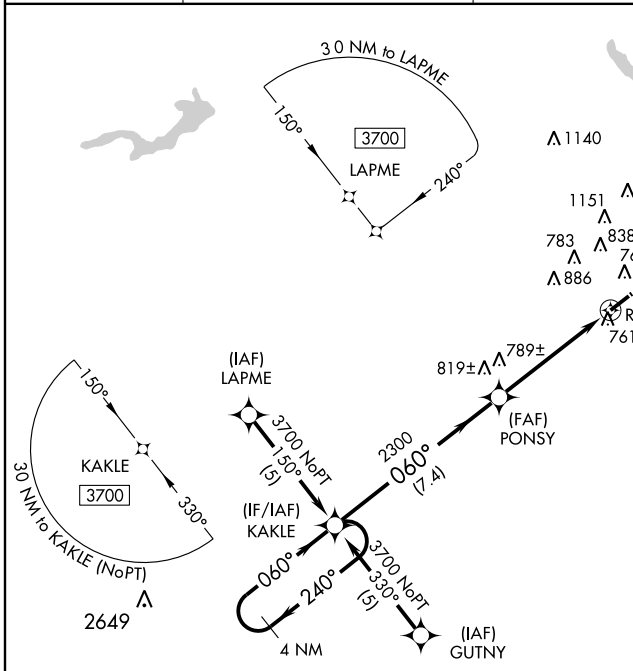
BURLINGTON-ALAMANCE RGNL (BUY)

WAAS CH 42911 W06A	APP CRS 060°	Rwy Idg TDZE Apt Elev	4999 616 616
--	------------------------	-----------------------------	---

⚠ For uncompensated Baro-VNAV systems, LNAV/VNAV NA below -16°C (4°F) or above 47°C (116°F). DME/DME RNP -0.3 NA. When local altimeter setting not received, Use Greensboro altimeter setting and increase all DA 96 feet and all MDA 100 feet and LPV all Cats., LNAV/VNAV all Cats., LNAV Cat. C, and Circling Cat. D visibilities ½ mile and LNAV Cat. D visibility ½ mile. Baro-VNAV and VDP NA when using Greensboro altimeter setting.

MISSED APPROACH: Climb to 3000 direct ALOME and hold.

ASOS 135.325	GREENSBORO APP CON 118.5 327.075	CLNC DEL 120.25	UNICOM 122.975 (CTAF) 0
------------------------	--	---------------------------	--



CATEGORY	A	B	C	D
LPV DA		816-3/4	200 (200-3/4)	
LNAV/VNAV DA		1031-1 1/2	415 (500-1 1/2)	
LNAV MDA	1040-1	424 (500-1)	1040-1 1/4	424 (500-1 1/4)
CIRCLING	1100-1	484 (500-1)	1100-1 1/2	1300-2 1/4
			484 (500-1 1/2)	684 (700-2 1/4)

SE-2, 22 OCT 2009 to 19 NOV 2009

SE-2, 22 OCT 2009 to 19 NOV 2009