

RNAV (GPS) RWY 30

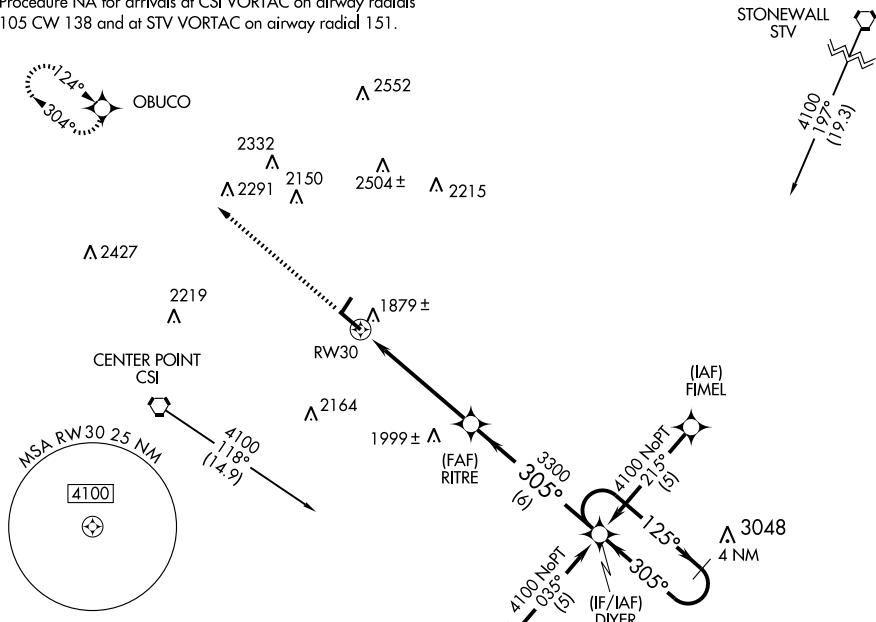
KERRVILLE MUNI/ LOUIS SCHREINER FIELD (ERV)

WAAS Ch 77527 W30A	APP CRS 305°	Rwy Idg 6000 TDZE 1589 Apt Elev 1617
--	------------------------	---

▼ DME/DME RNP-0.3 NA. ▲ When VGSI inoperative, procedure NA at night.	MISSED APPROACH: Climb to 4000 direct OBUCO and hold.
--	--

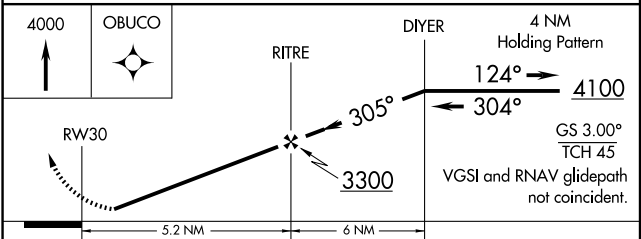
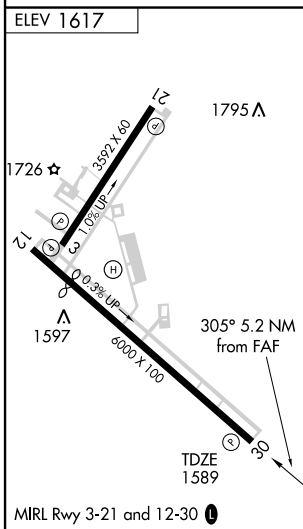
AWOS-3 118.125	HOUSTON CENTER 134.95 269.4	CLNC DEL 134.95	UNICOM 122.7 (CTAF)
--------------------------	---------------------------------------	---------------------------	-------------------------------

Procedure NA for arrivals at CSI VORTAC on airway radials 105 CW 138 and at STV VORTAC on airway radial 151.



SC-3, 22 OCT 2009 to 19 NOV 2009

SC-3, 22 OCT 2009 to 19 NOV 2009



CATEGORY	A	B	C	D
LPV DA	1860-1		271 (300-1)	NA
LNAV/VNAV DA	NA			
LNAV MDA	2140-1	551 (600-1)	2140-1½ 551 (600-1½)	NA
CIRCLING	2320-1 703 (800-1)	2340-1 723 (800-1)	2380-2¼ 763 (800-2¼)	NA

RNAV (GPS) RWY 30