

KERRVILLE, TEXAS

AL-5690 (FAA)

# RNAV (GPS) RWY 12

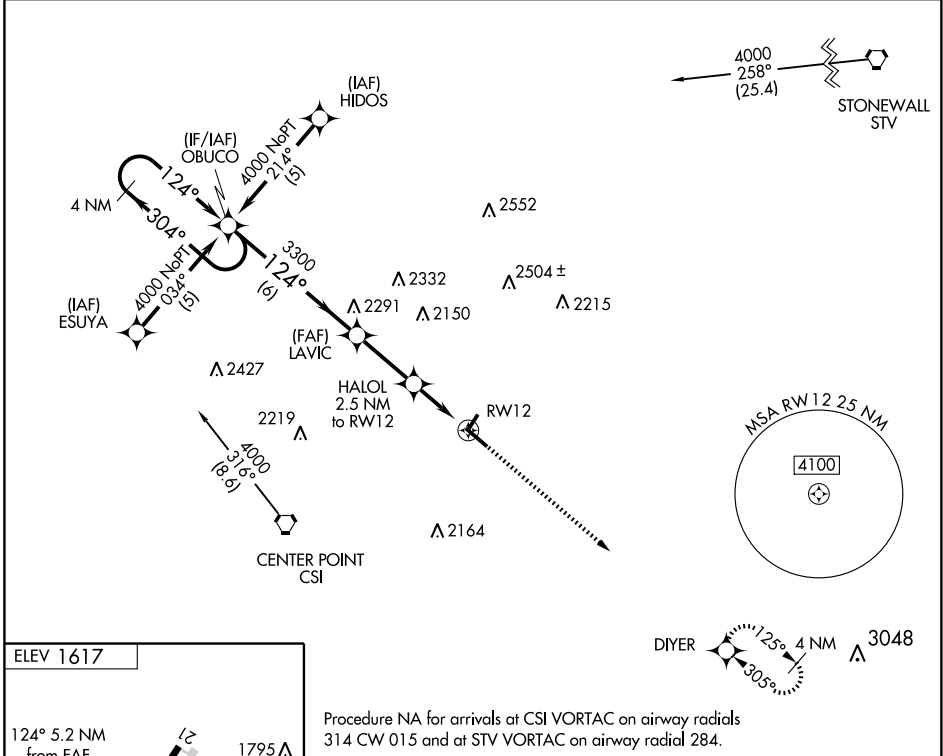
KERRVILLE MUNI/LOUIS SCHREINER FIELD (ERV)

APP CRS <b>124°</b>	Rwy Idg <b>5310</b>
	TDZE <b>1584</b>
	Apt Elev <b>1617</b>

**▼** DME/DME RNP-0.3 NA.  
**▲** When VGSI inoperative, procedure NA at night.

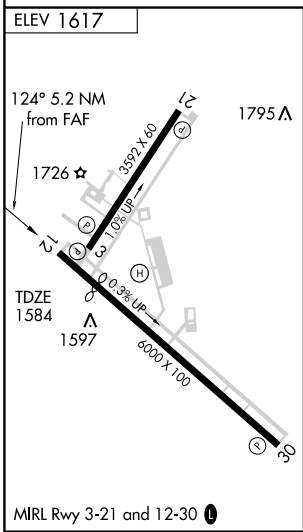
MISSED APPROACH: Climb to 4100 direct DIYER and hold.

AWOS-3 <b>118.125</b>	HOUSTON CENTER <b>134.95 269.4</b>	CLNC DEL <b>134.95</b>	UNICOM <b>122.7 (CTAF)</b> <b>0</b>
--------------------------	---------------------------------------	---------------------------	--

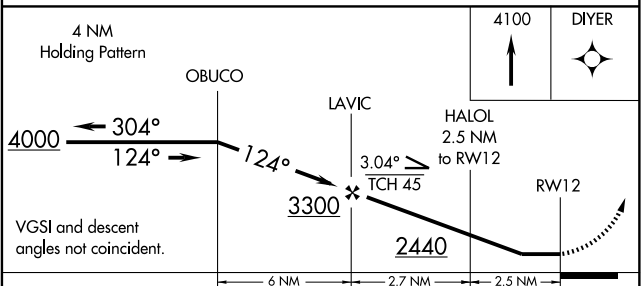


SC-3, 22 OCT 2009 to 19 NOV 2009

SC-3, 22 OCT 2009 to 19 NOV 2009



Procedure NA for arrivals at CSI VORTAC on airway radials 314 CW 015 and at STV VORTAC on airway radial 284.



CATEGORY	A	B	C	D
LNAV MDA	2160-1	576 (600-1)	2160-1½ 576 (600-1½)	NA
CIRCLING	2320-1 703 (800-1)	2340-1 723 (800-1)	2380-2¼ 763 (800-2¼)	NA

KERRVILLE, TEXAS  
Orig 09015

29° 59' N-99° 05' W

# RNAV (GPS) RWY 12