

ODESSA, TEXAS

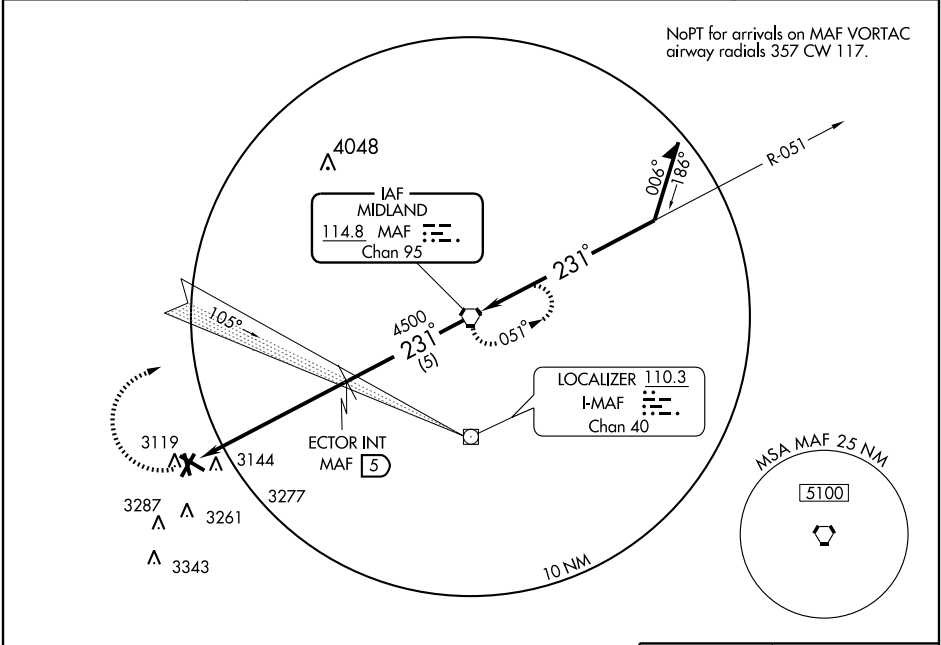
AL-5689 (FAA)

VOR-A
ODESSA-SCHLEMEYER FIELD (ODO)

VORTAC MAF 114.8 Chan 95	APP CRS 231°	Rwy Idg TDZE Apt Elev N/A N/A 3004
----------------------------------------------	------------------------	------------------------------------------------------------------------

▼ Circling not authorized south of airport between runways 2-20 and 16-34. MISSED APPROACH: Climbing right turn to 5000 direct MAF VORTAC and hold.

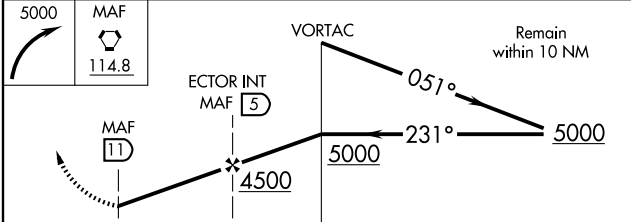
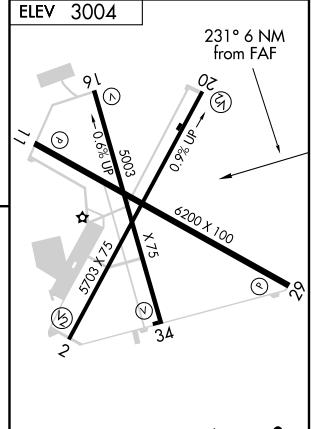
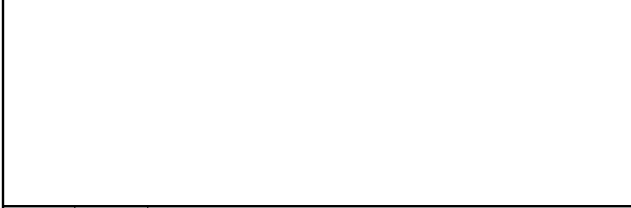
ASOS 119.275	MIDLAND APP CON* 124.6 256.875	CLNC DEL 121.7	UNICOM 123.0 (CTAF)
------------------------	------------------------------------------	--------------------------	-------------------------------



NoPT for arrivals on MAF VORTAC airway radials 357 CW 117.

SC-3, 22 OCT 2009 to 19 NOV 2009

SC-3, 22 OCT 2009 to 19 NOV 2009



CATEGORY	A		C	D	FAF to MAP 6 NM					
	3460-1 456 (500-1)		3460-1½ 456 (500-1½)	3560-2 556 (600-2)	Knots	60	90	120	150	180
CIRCLING	3460-1 456 (500-1)		3460-1½ 456 (500-1½)	3560-2 556 (600-2)	Min:Sec	6:00	4:00	3:00	2:24	2:00

ODESSA, TEXAS
Amdt 6 08325

31° 55'N-102° 23'W

ODESSA-SCHLEMEYER FIELD (ODO)

VOR-A