

RNAV (GPS) RWY 18

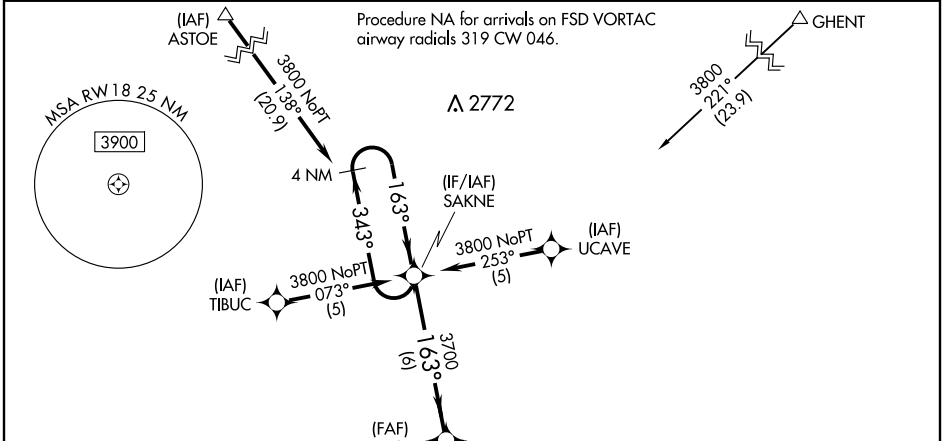
PIPESTONE MUNI (PQN)

APP CRS	Rwy Idg	4302
163°	TDZE	1736
	Apt Elev	1736

⚠ DME/DME RNP -0.3 NA.
⚠ When local altimeter setting not received, use Sioux Falls altimeter setting and increase all MDAs 120 feet and Cat C visibility ¼ mile. VDP NA with Sioux Falls altimeter setting.

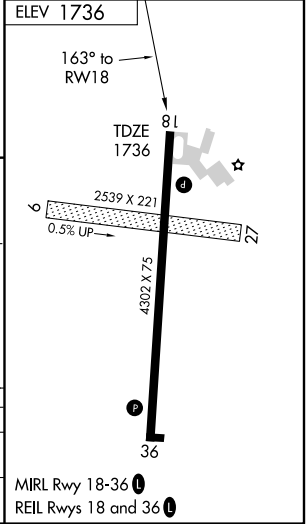
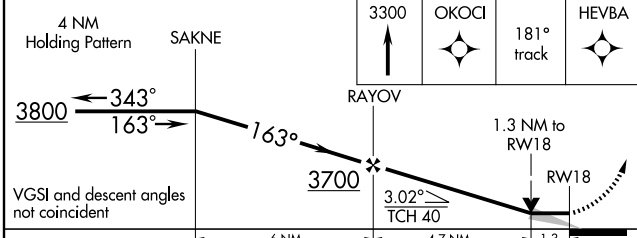
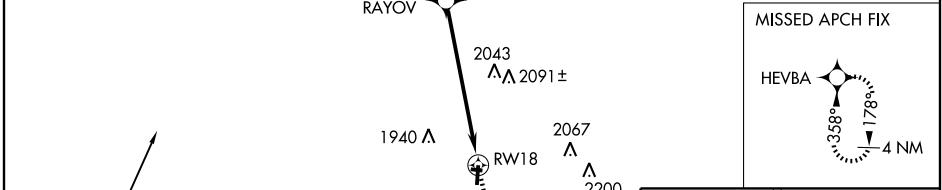
MISSED APPROACH: Climb to 3300 direct OKOCI and via 181° track to HEVBA and hold.

AWOS-3 118.375	MINNEAPOLIS CENTER 132.05 317.4	GCO 121.725	UNICOM 122.8 (CTAF) 0
--------------------------	---	-----------------------	---------------------------------



NC-1, 22 OCT 2009 to 19 NOV 2009

NC-1, 22 OCT 2009 to 19 NOV 2009



CATEGORY	A	B	C	D
RNAV MDA	2180-1	444 (500-1)	2180-1½ 444 (500-1½)	NA
CIRCLING	2180-1 444 (500-1)	2200-1 464 (500-1)	2280-1½ 544 (600-1½)	NA