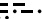




# WILDCAT TWO DEPARTURE


ATIS 119.35  
KANSAS CITY DEP CON  
118.9 294.7

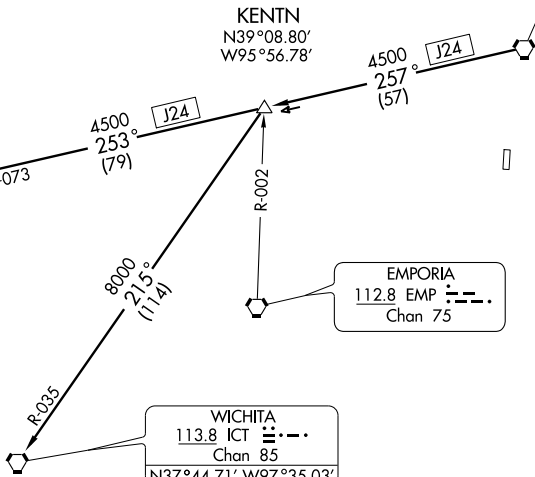
KANSAS CITY  
113.25 MCI   
Chan 79(Y)  
N39°17.12' W94°44.22'

KENTN  
N39°08.80'  
W95°56.78'

SALINA  
117.1 SLN   
Chan 118  
N38°55.51' W97°37.28'  
L-10, H-5

EMPORIA  
112.8 EMP   
Chan 75

WICHITA  
113.8 ICT   
Chan 85  
N37°44.71' W97°35.03'  
L-10-15, H-5



NC-2, 22 OCT 2009 to 19 NOV 2009

NC-2, 22 OCT 2009 to 19 NOV 2009

NOTE: Chart not to scale



## DEPARTURE ROUTE DESCRIPTION

Fly assigned heading and altitude for vector to appropriate route. Expect filed altitude 10 minutes after departure.

KENTN TRANSITION (WLDCT2.KENTN): From over MCI VORTAC via MCI R-257 to KENTN INT.

SALINA TRANSITION (WLDCT2.SLN): From over MCI VORTAC via MCI R-257 and SLN R-073 to SLN VORTAC.

WICHITA TRANSITION (WLDCT2.ICT): From over MCI VORTAC via MCI R-257 to KENTN INT, then via ICT R-035 to ICT VORTAC.