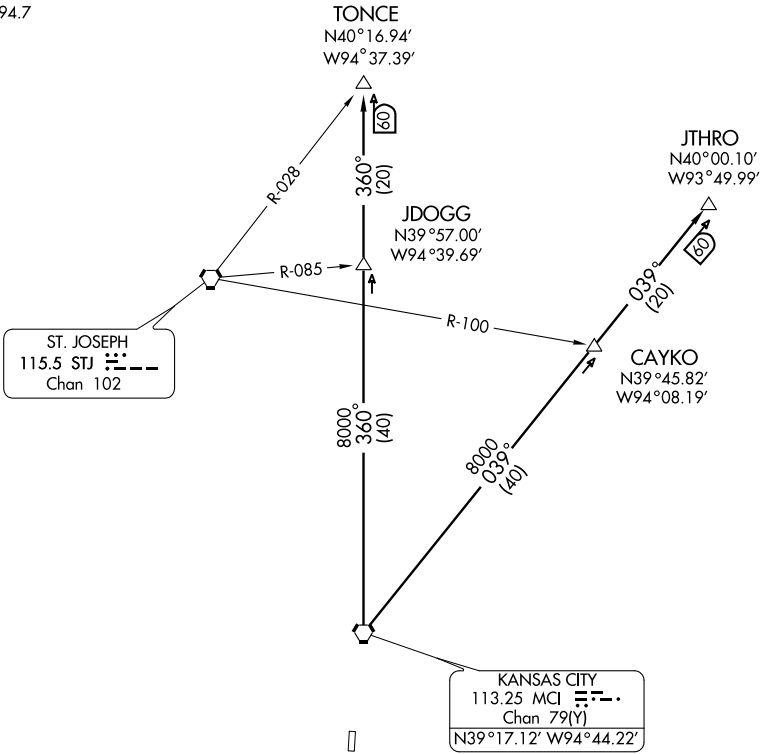


# ROYAL THREE DEPARTURE

ATIS 119.35  
KANSAS CITY DEP CON  
118.9 294.7



NC-2, 22 OCT 2009 to 19 NOV 2009

NC-2, 22 OCT 2009 to 19 NOV 2009

NOTE: Chart not to scale



## DEPARTURE ROUTE DESCRIPTION

Fly assigned heading and altitude for vector to appropriate route. Expect filed altitude 10 minutes after departure.

JTHRO TRANSITION (ROYAL3.JTHRO): From over MCI VORTAC via MCI R-039 to JTHRO INT.

TONCE TRANSITION (ROYAL3.TONCE): From over MCI VORTAC via MCI R-360 to TONCE INT.