

OLATHE, KANSAS

AL-5687 (FAA)

LOC RWY 36

OLATHE/JOHNSON COUNTY EXECUTIVE (OJC)

LOC I-PKX 108.3	APP CRS 356°	Rwy Idg 4098
		TDZE 1085
		Apt Elev 1096

NA * MCI VORTAC feeder course is a flight check value. For inoperative MALSR, increase S-36 Cats A/B/C visibility to 1 mile.

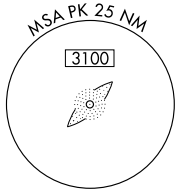
MALSR
AS

MISSED APPROACH: Climb to 2700 direct FUROR LOM/OJC 5.7 DME and hold.

ATIS 119.35	KANSAS CITY APP CON 118.9 294.7	EXECUTIVE TOWER* 126.0 (CTAF) 225.4	GND CON 121.6	UNICOM 122.95
-----------------------	---	---	-------------------------	-------------------------

ADF REQUIRED

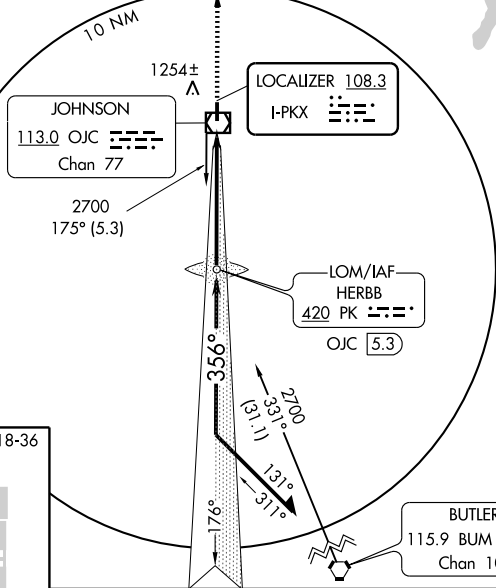
2049
▲



KANSAS CITY
113.25 MCI
Chan 79 (Y)

*3000
176° (31.9)
to PK LOM

LOM FUROR
526 OJ
OJC 5.7



NC-2, 22 OCT 2009 to 19 NOV 2009

NC-2, 22 OCT 2009 to 19 NOV 2009

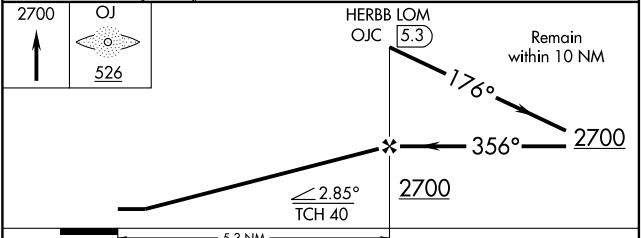
ELEV 1096 MRL Rwy 18-36

81
4098 X 75
1.1% UP
1151
1157
TDZE 1085
36
356° 5.3 NM from FAF

▲ 1117±
▲ 1105±

FAF to MAP 5.3 NM

Knots	60	90	120	150	180
Min:Sec	5:18	3:32	2:39	2:07	1:46



CATEGORY	A	B	C	D
S-36	1480-3/4 395 (400-3/4)			NA
CIRCLING	1620-1	524 (600-1)	1620-1 1/2 524 (600-1 1/2)	NA

OLATHE, KANSAS
Amdt 1A 09239

OLATHE/JOHNSON COUNTY EXECUTIVE (OJC)
38°51'N - 94°44'W
LOC RWY 36