

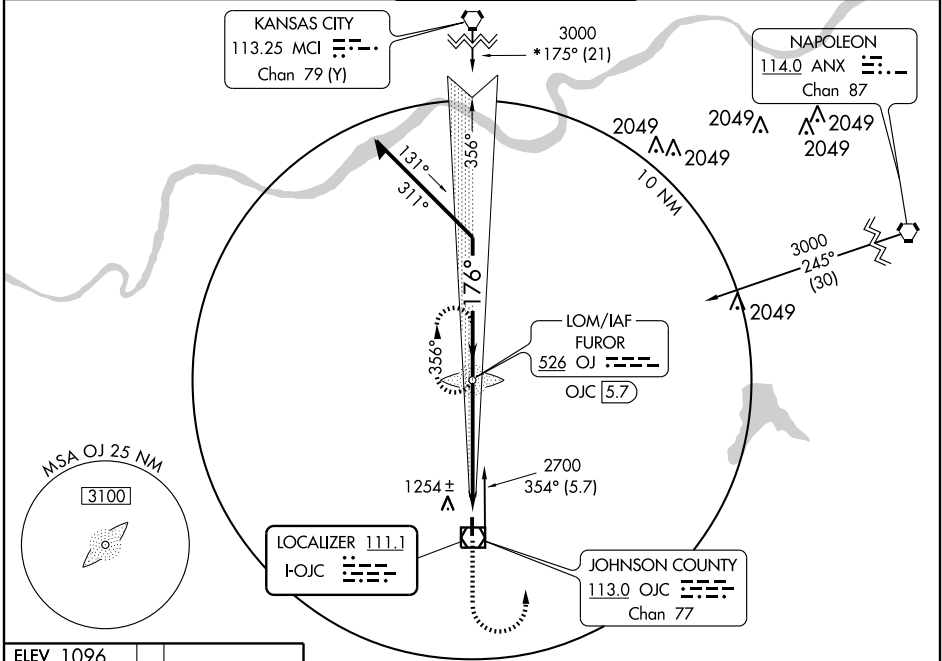
LOC RWY 18

OLATHE/JOHNSON COUNTY EXECUTIVE (OJC)

LOC I-OJC 111.1	APP CRS 176°	Rwy Idg 4098
		TDZE 1096
		Apt Elev 1096

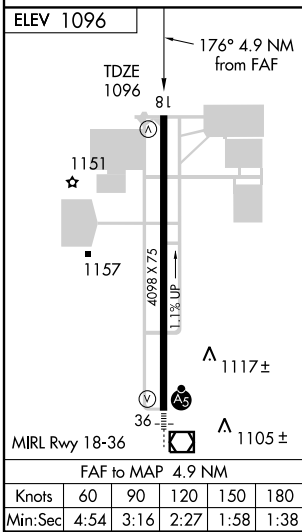
NA * MCI VORTAC feeder course is a flight check value. MISSED APPROACH: Climb to 1700 then left climbing turn to 2700 direct FUROR LOM/OJC 5.7 DME and hold.

ATIS 119.35	KANSAS CITY APP CON 118.9 294.7	EXECUTIVE TOWER * 126.0(CTAF) 225.4	GND CON 121.6	UNICOM 122.95
-----------------------	---	---	-------------------------	-------------------------

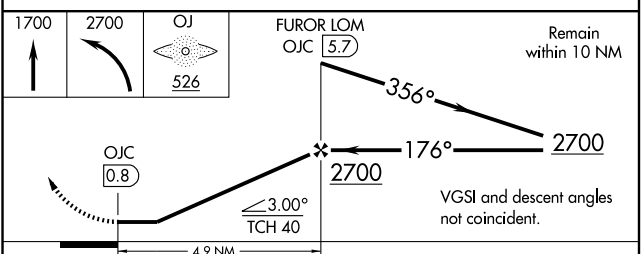


NC-2, 22 OCT 2009 to 19 NOV 2009

NC-2, 22 OCT 2009 to 19 NOV 2009



ADF REQUIRED



CATEGORY	A	B	C	D
S-18	1440-1	344 (400-1)		NA
CIRCLING	1620-1	524 (600-1)	1620-1½ 524 (600-1½)	NA