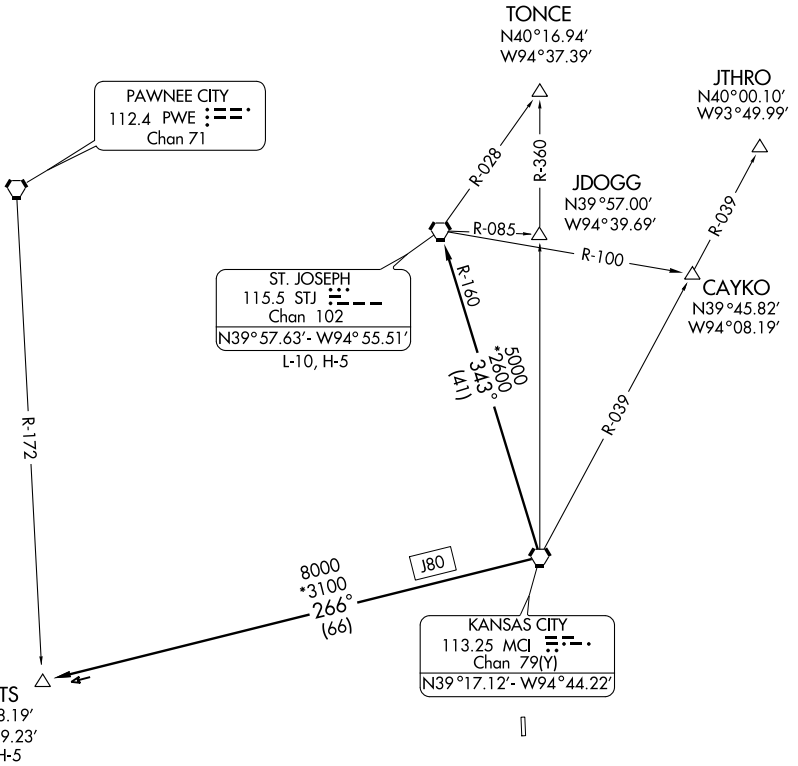


CHIEF THREE DEPARTURE

ATIS 119.35
KANSAS CITY DEP CON
118.9 294.7



NC-2, 22 OCT 2009 to 19 NOV 2009

NC-2, 22 OCT 2009 to 19 NOV 2009

NOTE: Chart not to scale.



DEPARTURE ROUTE DESCRIPTION

Fly assigned heading and altitude for vector to appropriate route. Expect filed altitude 10 minutes after departure.

CATTS TRANSITION (CHIEF3.CATTS): From over MCI VORTAC via MCI R-266 to CATTS INT.

ST. JOSEPH TRANSITION (CHIEF3.STJ): From over MCI VORTAC via MCI R-343 and STJ R-160 to STJ VORTAC.