

# RNAV (GPS) RWY 31

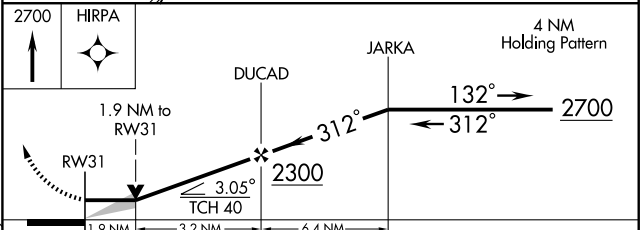
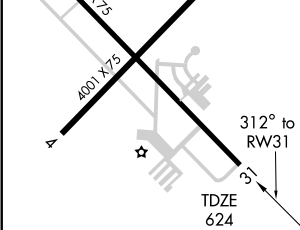
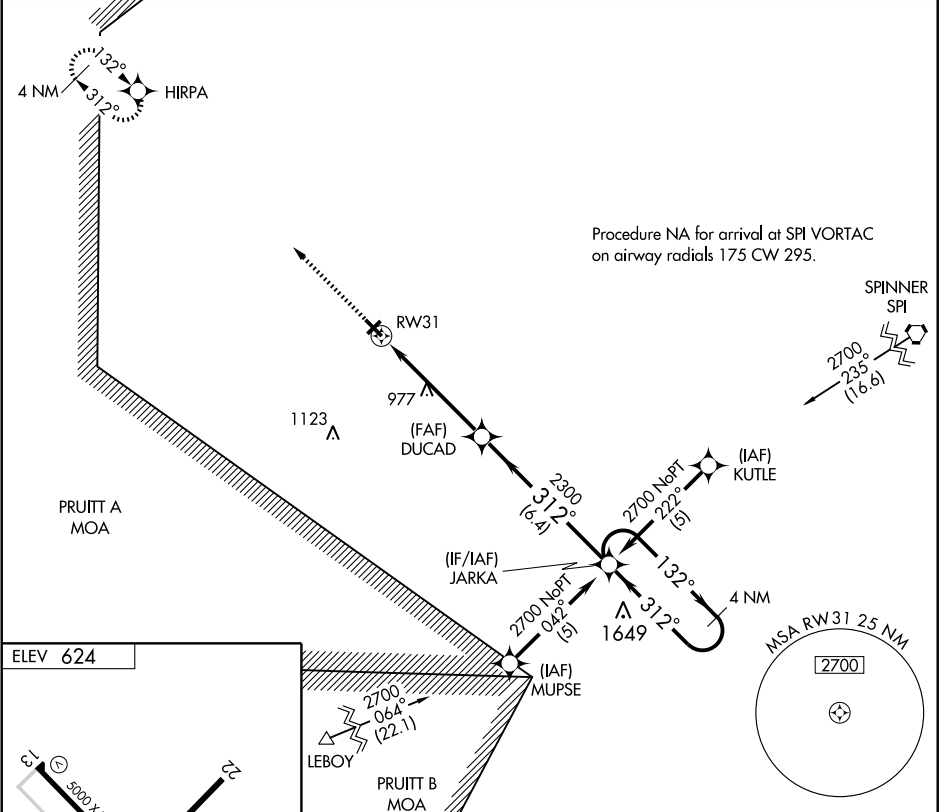
JACKSONVILLE MUNI (IJX)

APP CRS <b>312°</b>	Rwy Idg <b>5000</b>
	TDZE <b>624</b>
	Apt Elev <b>624</b>

**⚠** VDP NA when using Springfield, IL altimeter setting. DME/DME RNP-0.3 NA. If local altimeter setting not received, use Springfield, IL altimeter setting and increase all MDAs 80 feet.

**MISSED APPROACH:** Climb to 2700 direct HIRPA and hold.

AWOS-3 <b>108.6</b>	SPRINGFIELD APP CON ★ <b>118.45 118.6 323.0</b>	CLNC DEL <b>118.45</b>	UNICOM <b>122.8 (CTAF) ①</b>
------------------------	--	---------------------------	---------------------------------



CATEGORY	A	B	C	D
LNAV MDA	1280-1	656 (700-1)	1280-1¾ 656 (700-1¾)	1280-2 656 (700-2)
CIRCLING	1280-1	656 (700-1)	1280-1¾ 656 (700-1¾)	1280-2 656 (700-2)

REIL Rwy 13 and 31 ①  
MIRL Rwy 4-22 and 13-31 ①

EC-3, 22 OCT 2009 to 19 NOV 2009

EC-3, 22 OCT 2009 to 19 NOV 2009