

RNAV (GPS) RWY 22

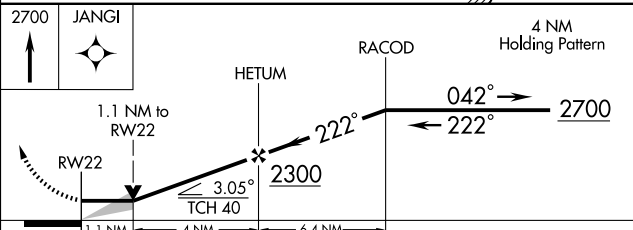
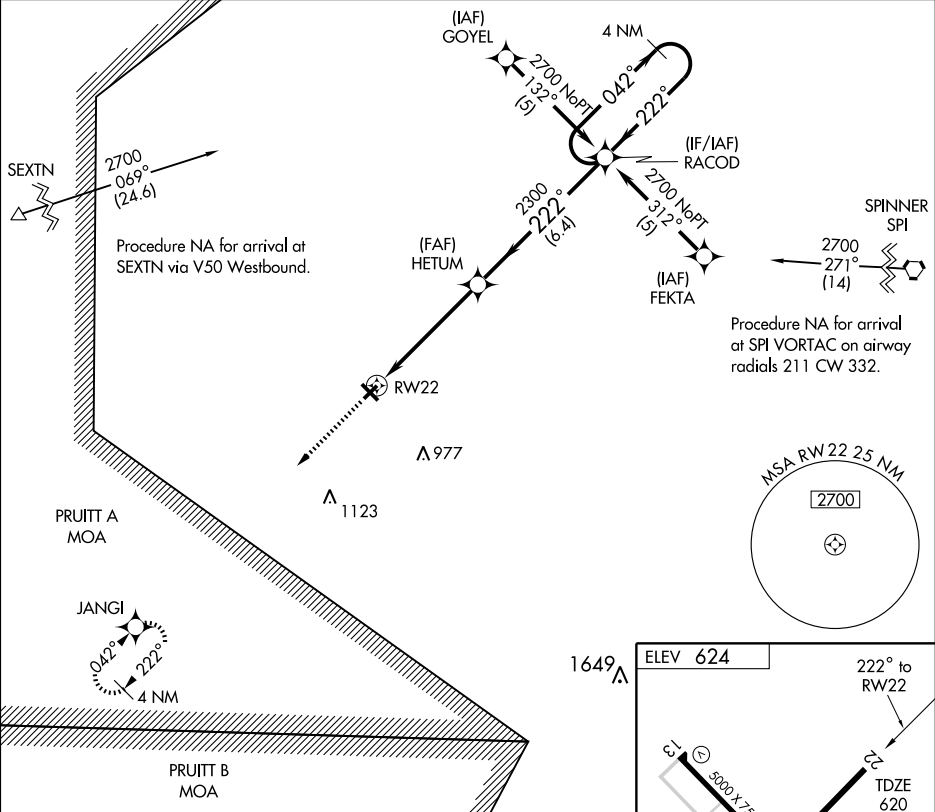
JACKSONVILLE MUNI (IJX)

APP CRS	Rwy Idg	4001
222°	TDZE	620
	Apt Elev	624

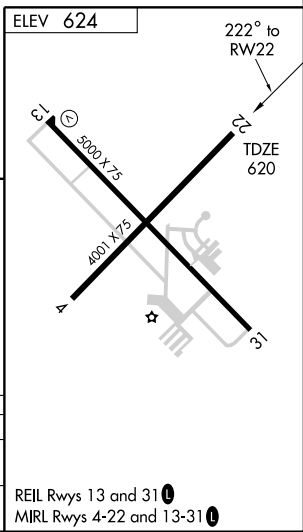
A DME/DME RNP-0.3 NA. If local altimeter setting not received, use Springfield, IL altimeter setting and increase all MDAs 80 feet. VDP NA with Springfield, IL altimeter setting.

MISSED APPROACH: Climb to 2700 direct JANGI and hold.

AWOS-3 108.6	SPRINGFIELD APP CON ★ 118.45 118.6 323.0	CLNC DEL 118.45	UNICOM 122.8 (CTAF) 1
------------------------	--	---------------------------	---------------------------------



CATEGORY	A	B	C	D
LNVA MDA	1020-1 400 (400-1)			1020-1¼ 400 (400-1¼)
CIRCLING	1040-1 416 (500-1)	1080-1 456 (500-1)	1080-1½ 456 (500-1½)	1180-2 556 (600-2)



REIL Rwy 13 and 31 1
MIRL Rwy 4-22 and 13-31 1

EC-3, 22 OCT 2009 to 19 NOV 2009

EC-3, 22 OCT 2009 to 19 NOV 2009