

VOR/DME RWY 17

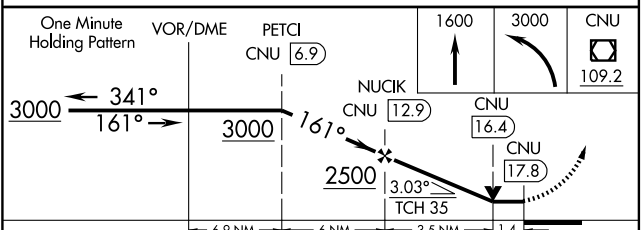
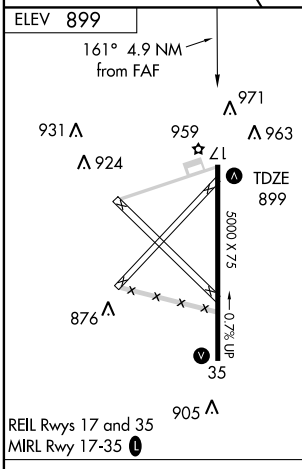
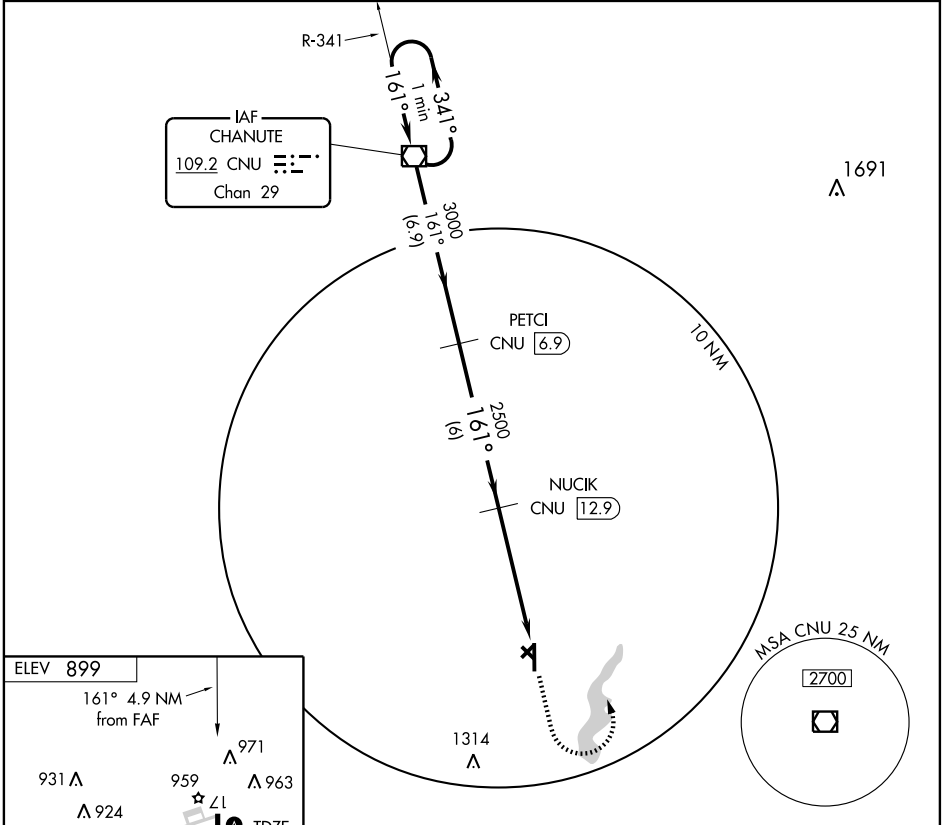
PARSONS/ TRI-CITY (PPF)

VOR/DME CNU 109.2 Chan 29	APP CRS 161°	Rwy Idg 5000 TDZE 899 Apt Elev 899
---	------------------------	---

▼ If local altimeter setting not received, use Coffeyville Muni altimeter setting and increase all MDAs 60 feet.
▲ VDP NA with Coffeyville Muni altimeter setting.

MISSED APPROACH: Climb to 1600 then climbing left turn to 3000 direct CNU VOR/DME and hold.

ASOS 118.175	KANSAS CITY CENTER 132.9 279.5	UNICOM 123.0 (CTAF) 0
------------------------	--	---------------------------------



CATEGORY	A	B	C	D
S-17	1380-1	481 (500-1)	1380-1¼ 481 (500-1¼)	NA
CIRCLING	1380-1	481 (500-1)	1380-1½ 481 (500-1½)	NA

ELEV	899				
REIL Rwys 17 and 35	MIRL Rwy 17-35				
Knots	60	90	120	150	180
Min:Sec					

NC-2, 22 OCT 2009 to 19 NOV 2009

NC-2, 22 OCT 2009 to 19 NOV 2009