

# RNAV (GPS) RWY 35

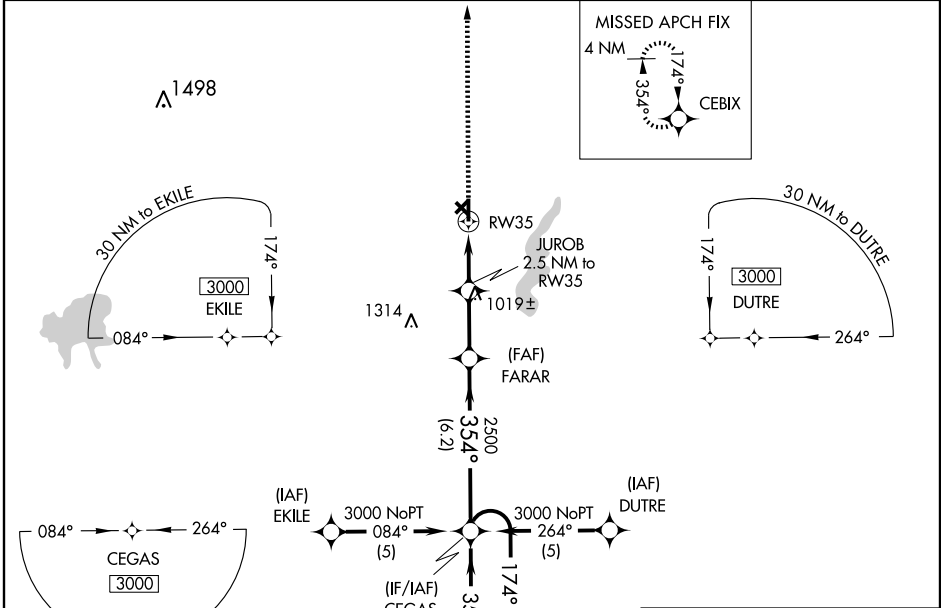
PARSONS/ TRI-CITY (PPF)

WAAS CH <b>78208</b> <b>W35A</b>	APP CRS <b>354°</b>	Rwy Idg <b>5000</b> TDZE <b>879</b> Apt Elev <b>900</b>
--	------------------------	---

Baro-VNAV NA when using Coffeyville Muni altimeter setting. For uncompensated Baro-VNAV systems, LNAV/VNAV NA below -16°C (4°F) or above 54°C (130°F). DME/DME RNP-0.3 NA. Visibility reduction by helicopters NA. When local altimeter setting not received, use Coffeyville Muni altimeter setting and increase all DA 54 feet and LNAV/VNAV visibility ½ mile all Cats; increase all MDA 60 feet.

MISSED APPROACH: Climb to 3000 direct CEBIX and hold.

ASOS <b>118.175</b>	KANSAS CITY CENTER <b>132.9 279.5</b>	UNICOM <b>123.0 (CTAF)</b>
------------------------	--	-------------------------------

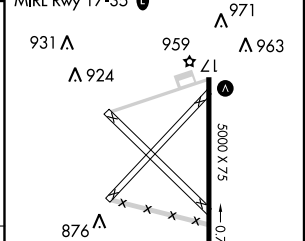
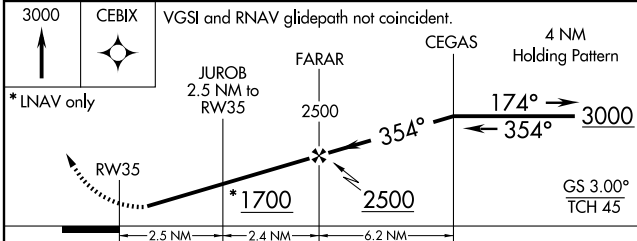


NC-2, 22 OCT 2009 to 19 NOV 2009

NC-2, 22 OCT 2009 to 19 NOV 2009



ELEV 900
REIL Rwy 17 and 35
MIRL Rwy 17-35



CATEGORY	A	B	C	D
LPV DA	1129-1	250 (300-1)		NA
LNAV/VNAV DA	1173-1	294 (300-1)		NA
LNAV MDA	1300-1	421 (400-1)	1300-1¼ 421 (400-1¼)	NA
CIRCLING	1340-1 440 (500-1)	1360-1 460 (500-1)	1360-1½ 460 (500-1½)	NA