

RNAV (GPS) RWY 17

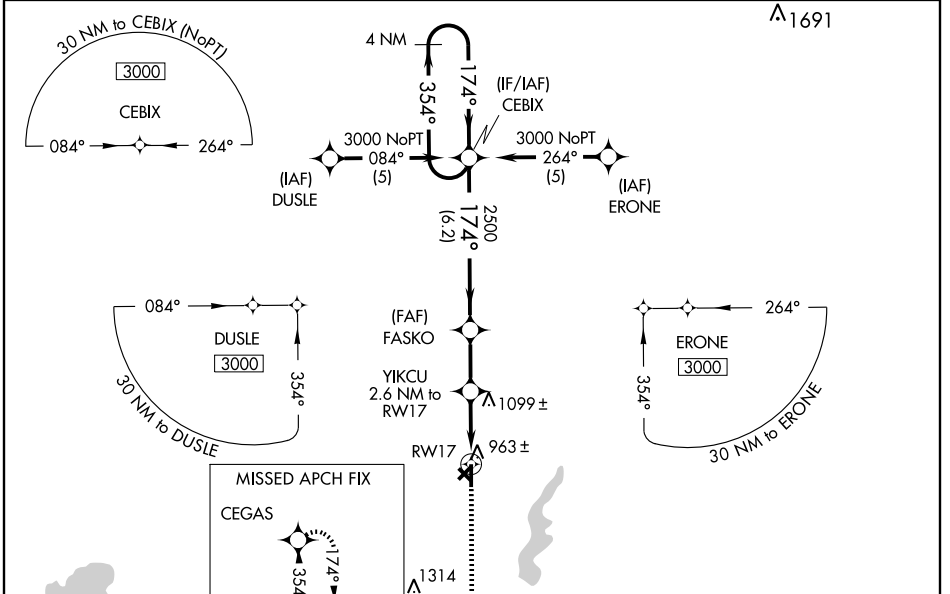
PARSONS/ TRI-CITY (PPF)

WAAS CH 86508 W17A	APP CRS 174°	Rwy Idg TDZE Apt Elev	5000 900 900
--	------------------------	-----------------------------	---

For uncompensated Baro-VNAV systems, procedure NA below -16°C (4°F) or above 54°C (130°F). DME/DME RNP-0.3 NA. Visibility reduction by helicopters NA. Baro-VNAV and VDP NA when using Coffeyville Muni altimeter setting. When local altimeter setting not received, use Coffeyville Muni altimeter setting and increase all DA 54 feet and LPV, LNAV/VNAV visibility ¼ mile all Cats; increase all MDA 60 feet and LNAV Cat C visibility ¼ mile.

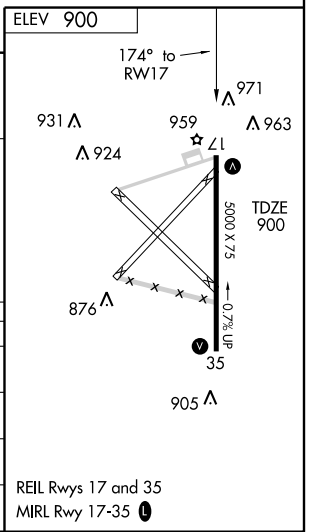
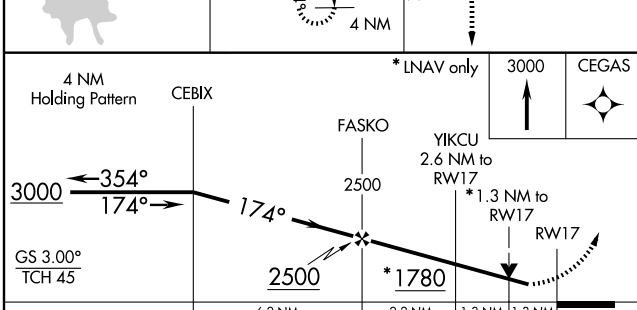
MISSED APPROACH: Climb to 3000 direct CEGAS and hold.

ASOS 118.175	KANSAS CITY CENTER 132.9 279.5	UNICOM 123.0 (CTAF)
------------------------	--	-------------------------------



NC-2, 22 OCT 2009 to 19 NOV 2009

NC-2, 22 OCT 2009 to 19 NOV 2009



CATEGORY	A	B	C	D
LPV DA	1193-1	293 (300-1)	NA	NA
LNAV/VNAV DA	1255-1¼	355 (400-1¼)	NA	NA
LNAV MDA	1360-1	460 (500-1)	1360-1¼ 460 (500-1¼)	NA
CIRCLING	1360-1	460 (500-1)	1360-1½ 460 (500-1½)	NA

REIL Rwys 17 and 35
MIRL Rwy 17-35