

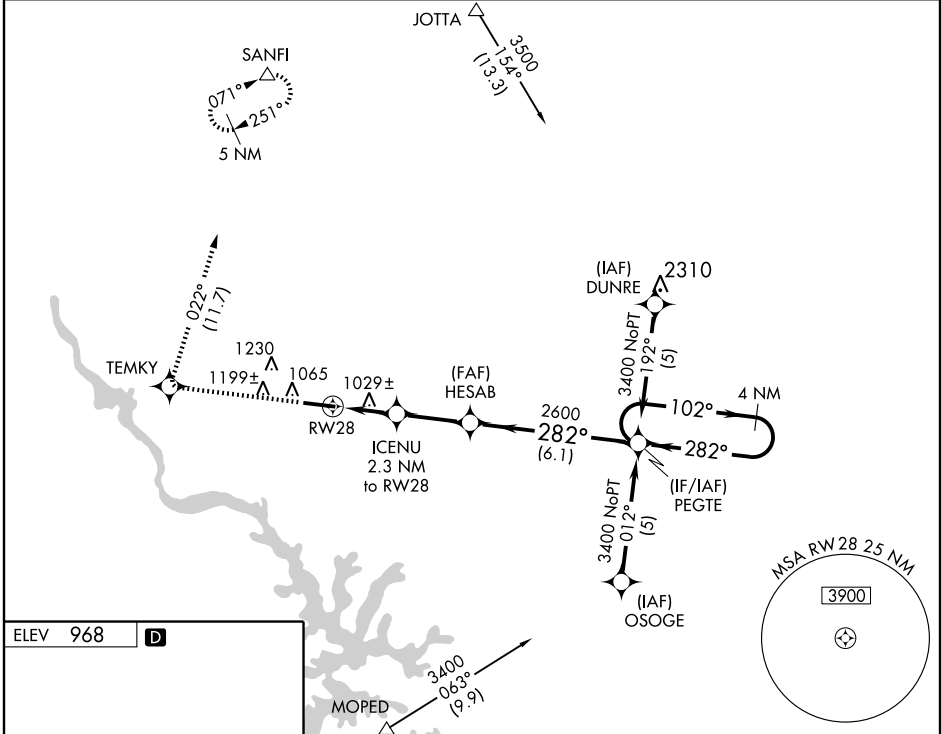
# RNAV (GPS) RWY 28

STATESVILLE RGNL (SVH)

WAAS CH <b>60903</b> <b>W28A</b>	APP CRS <b>282°</b>	Rwy Idg TDZE <b>966</b> Apt Elev <b>968</b>	<b>5456</b> <b>966</b> <b>968</b>
--	------------------------	---	---

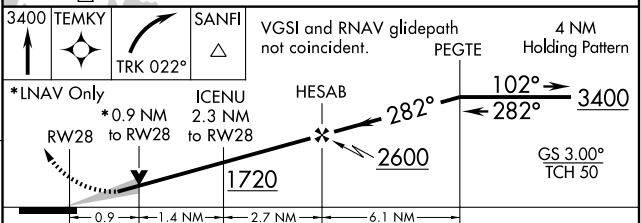
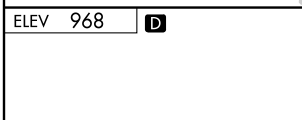
<p><b>▽</b> DME/DME RNP-0.3 NA. Baro-VNAV NA below -16°C (4°F). If local altimeter setting not received, use Lincoln ton altimeter setting and increase all DA/MDAs 60 feet. VDP and Baro-VNAV NA when using Lincoln ton altimeter setting. For inoperative MALSR, increase LPV all Cats and LNAV/VNAV Cat D visibilities to 1. Inoperative table does not apply to LNAV Cat D.</p>	<p><b>MALSR</b></p>	<p><b>MISSED APPROACH:</b> Climb to 3400 direct TEMKY and right turn via 022° track to SANFI and hold.</p>
---	---------------------	--

AWOS-3 <b>119.225</b>	ATLANTA CENTER <b>125.15 263.0</b>	UNICOM <b>123.075 (CTAF) 0</b>
--------------------------	---------------------------------------	-----------------------------------



SE-2, 22 OCT 2009 to 19 NOV 2009

SE-2, 22 OCT 2009 to 19 NOV 2009



CATEGORY	A	B	C	D
LPV DA	1216-1/2 250 (300-1/2)			
LNAV/VNAV DA	1240-1/2	274 (300-1/2)		1240-3/4 274 (300-3/4)
LNAV MDA	1280-1/2	314 (400-1/2)		1280-1 314 (400-1)
CIRCLING	1420-1 452 (500-1)	1480-1 512 (600-1)	1540-1 1/2 572 (600-1 1/2)	1540-2 572 (600-2)

REIL Rwy 10 **0**  
HIRL Rwy 10-28 **0**