

RNAV (GPS) RWY 31

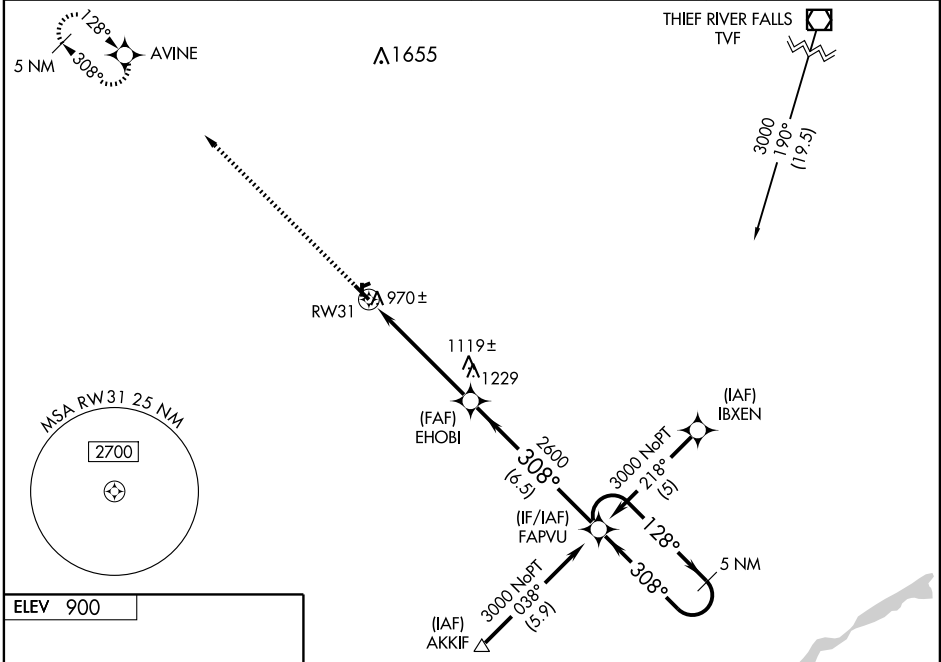
CROOKSTON MUNI-KIRKWOOD FIELD (CKN)

| | | |
|--|------------------------|---|
| WAAS CH 69304 W31A | APP CRS 308° | Rwy Idg 4300 TDZE 897 Apt Elev 900 |
|--|------------------------|---|

⚠ Baro-VNAV NA when using Grand Forks altimeter setting.
 For uncompensated Baro-VNAV systems, LNAV/VNAV NA below -16°C (4°F) or above 54°C (130°F).
 If local altimeter setting not received, use Grand Forks altimeter setting and increase all DAs 62 feet and all MDAs 80 feet.
 DME/DME RNP-0.3 NA. Visibility reduction by helicopters NA.

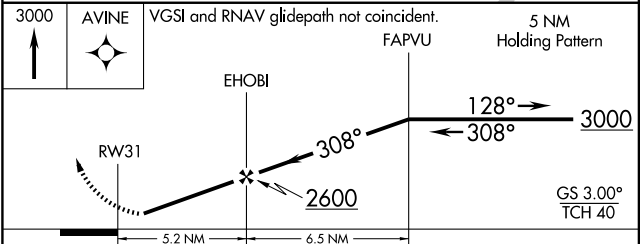
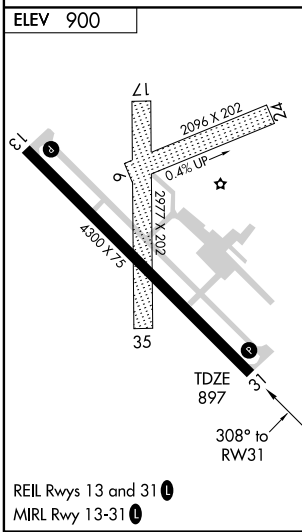
MISSED APPROACH: Climb to 3000 direct AVINE and hold.

| | | | |
|----------------------|---|---------------------------|--|
| AWOS-3 400 | GRAND FORKS APP CON 118.1 318.1 | CLNC DEL 118.15 | UNICOM 122.7 (CTAF) 📻 |
|----------------------|---|---------------------------|--|



NC-1, 22 OCT 2009 to 19 NOV 2009

NC-1, 22 OCT 2009 to 19 NOV 2009



| CATEGORY | A | B | C | D |
|--------------|----------------------|-------------|-------------------------|----|
| LPV DA | 1157-1 260 (300-1) | | | NA |
| LNAV/VNAV DA | 1320-1½ 423 (500-1½) | | | NA |
| LNAV MDA | 1380-1 | 483 (500-1) | 1380-1¼ 483 (500-1¼) | NA |
| CIRCLING | 1380-1 | 480 (500-1) | 1380-1½ 480 (500-1½) | NA |