

RNAV (GPS) RWY 13

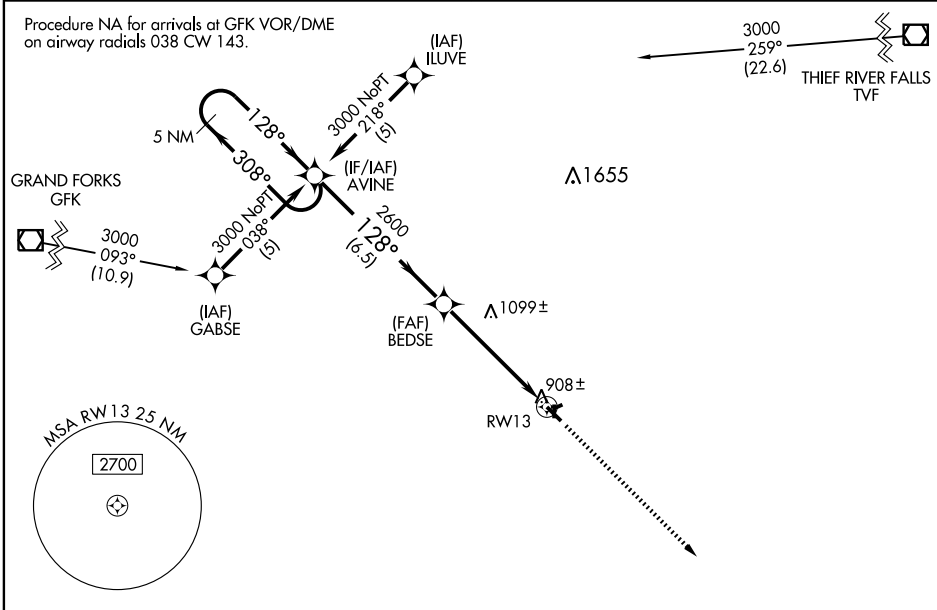
CROOKSTON MUNI-KIRKWOOD FIELD (CKN)

WAAS CH 72704 W13A	APP CRS 128°	Rwy Idg TDZE 896 Apt Elev 900
--	------------------------	---

⚠ Baro-VNAV NA when using Grand Forks altimeter setting.
⚠ For uncompensated Baro-VNAV systems, LNAV/VNAV NA below -16°C (4°F) or above 54°C (130°F). DME/DME RNP-0.3 NA.
 If local altimeter setting not received, use Grand Forks altimeter setting and increase all DAs 62 feet and all MDAs 80 feet.

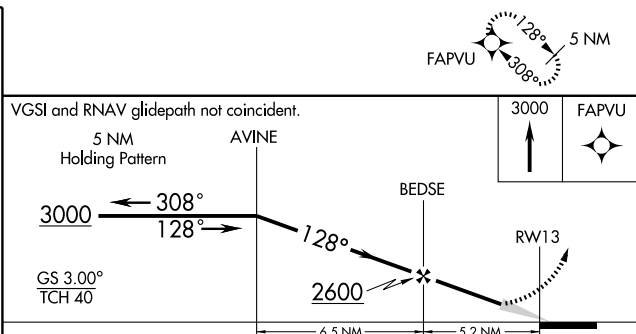
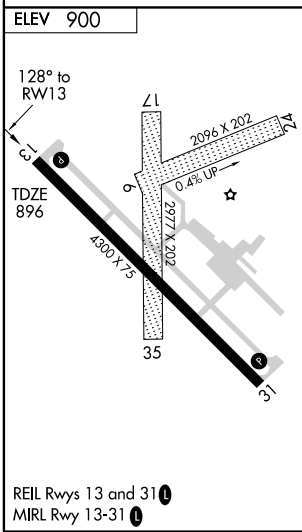
MISSED APPROACH: Climb to 3000 direct FAPVU and hold.

AWOS-3 400	GRAND FORKS APP CON 118.1 318.1	CLNC DEL 118.15	UNICOM 122.7 (CTAF) ①
----------------------	---	---------------------------	---------------------------------



NC-1, 22 OCT 2009 to 19 NOV 2009

NC-1, 22 OCT 2009 to 19 NOV 2009



CATEGORY	A	B	C	D
LPV DA	1146-1	250 (300-1)		NA
LNAV/VNAV DA	1210-1	314 (400-1)		NA
LNAV MDA	1360-1	464 (500-1)	1360-1 1/4 464 (500-1 1/4)	NA
CIRCLING	1360-1	460 (500-1)	1360-1 1/2 460 (500-1 1/2)	NA