

AINSWORTH, NEBRASKA

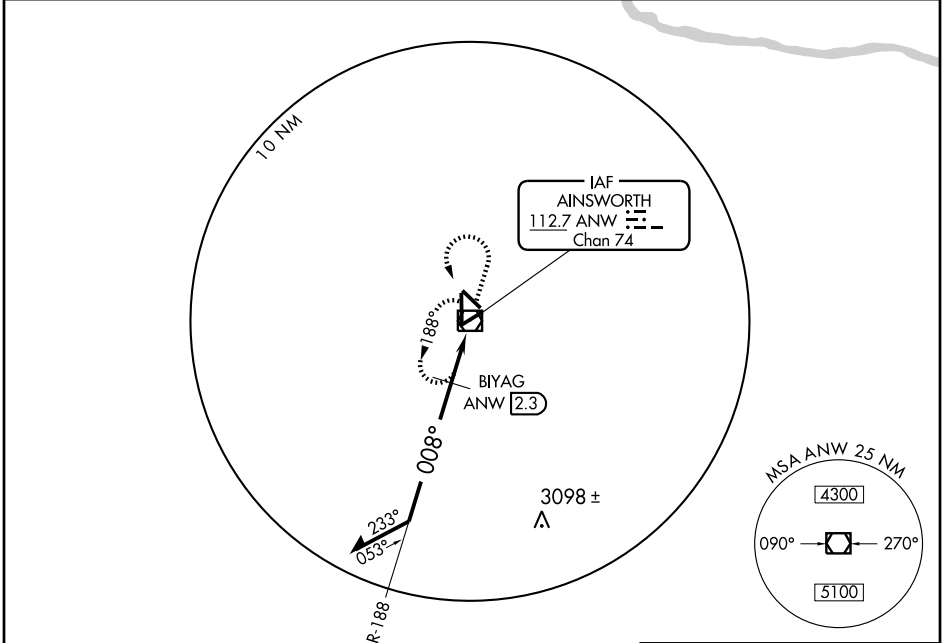
VOR/DME ANW <b>112.7</b> Chan <b>74</b>	APP CRS <b>008°</b>	Rwy Idg TDZE Apt Elev	<b>6824</b> <b>2589</b> <b>2589</b>
---	------------------------	-----------------------------	---

AL-5681 (FAA)

**VOR RWY 35**  
AINSWORTH MUNI(A.N.W)

<p><b>▼</b> For inoperative MALS R increase BIYAG fix minimums</p> <p><b>▲</b> S-35 Cat D visibility to 1 ¼.</p>	<p>MALS R</p>	<p>MISSED APPROACH: Climb to 3500 then climbing left turn to 6000 direct ANW VOR/DME and hold.</p>
--	---------------	--

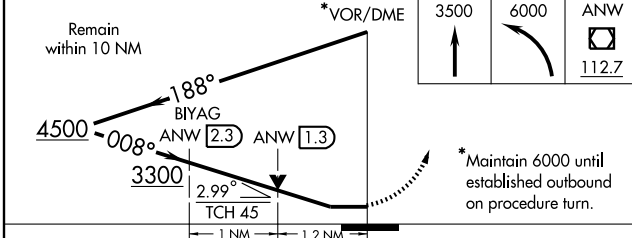
AWOS-3 <b>118,325</b>	DENVER CENTER <b>127.95 338.2</b>	UNICOM <b>122.8 (CTAF) 0</b>
--------------------------	--------------------------------------	---------------------------------



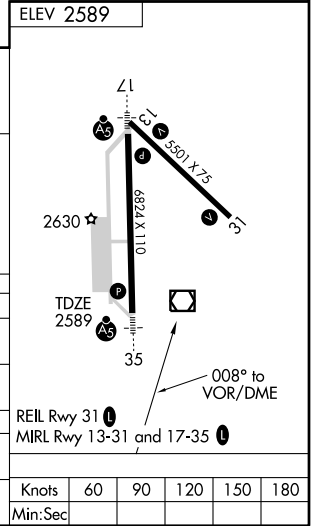
NC-2, 22 OCT 2009 to 19 NOV 2009

NC-2, 22 OCT 2009 to 19 NOV 2009

ELEV 2589	3500	6000	ANW 112.7
-----------	------	------	--------------



CATEGORY	A	B	C	D
S-35	3300-½	711 (800-½)	3300-1½ 711 (800-1½)	3300-1¾ 711 (800-1¾)
CIRCLING	3300-1	711 (800-1)	3300-2 711 (800-2)	3300-2¼ 711 (800-2¼)
BIYAG FIX MINIMUMS				
S-35	3000-½	411 (500-½)	3000-¾ 411 (500-¾)	3000-1 411 (500-1)
CIRCLING	3000-1 411 (500-1)	3040-1 451 (500-1)	3040-1½ 451 (500-1½)	3140-2 551 (600-2)



AINSWORTH, NEBRASKA  
Amdt 4 09071

42°35'N-100°00'W

AINSWORTH MUNI(A.N.W)  
**VOR RWY 35**

Knots	60	90	120	150	180
Min:Sec					