

AINSWORTH, NEBRASKA

AL-5681 (FAA)

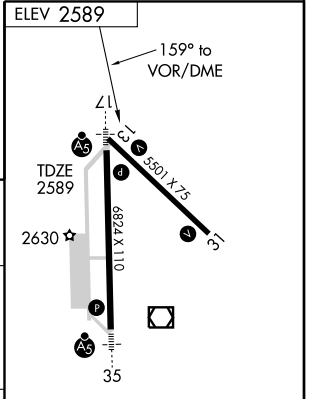
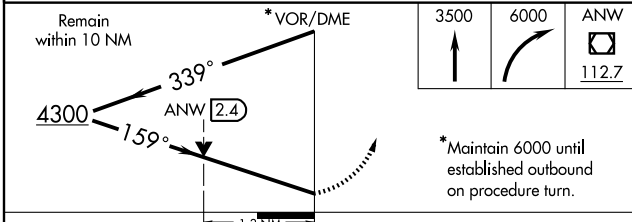
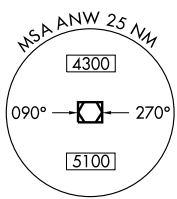
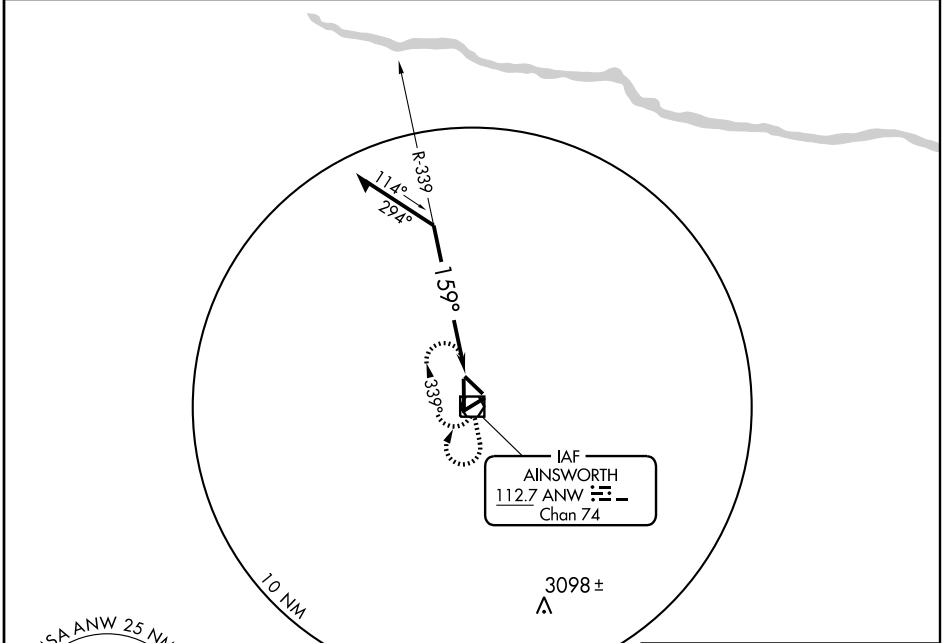
VOR/DME ANW 112.7 Chan 74	APP CRS 159°	Rwy Idg TDZE Apt Elev	6824 2589 2589
---	------------------------	-----------------------------	---

VOR RWY 17

AINSWORTH MUNI(A.NW)

	MISSED APPROACH: Climb to 3500 then climbing right turn to 6000 direct ANW VOR/DME and hold.	

AWOS-3 118,325	DENVER CENTER 127,95 338,2	UNICOM 122.8 (CTAF)
--------------------------	--------------------------------------	-------------------------------



CATEGORY	A	B	C	D
S-17	3060-1/2 471 (500-1/2)		3060-3/4 471 (500-3/4)	3060-1 471 (500-1)
CIRCLING	3060-1 471 (500-1)		3060-1 1/2 471 (500-1 1/2)	3140-2 551 (600-2)

REIL Rwy 31					
MIRL Rwy 13-31 and 17-35					
Knots	60	90	120	150	180
Min:Sec					

AINSWORTH, NEBRASKA
Amdt 3 09071

42°35'N-100°00'W

AINSWORTH MUNI(A.NW)

VOR RWY 17

NC-2, 22 OCT 2009 to 19 NOV 2009

NC-2, 22 OCT 2009 to 19 NOV 2009