


# RNAV (GPS) RWY 35

AINSWORTH MUNI (A.N.W)

APP CRS <b>353°</b>	Rwy Idg <b>6824</b>
	TDZE <b>2589</b>
	Apt Elev <b>2589</b>

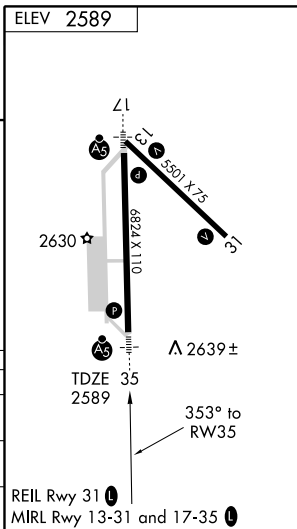
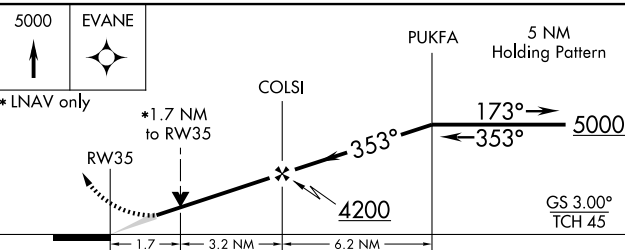
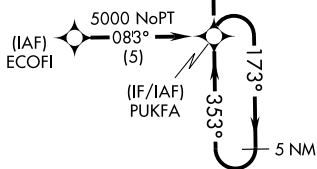
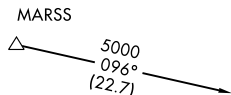
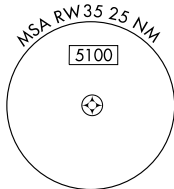
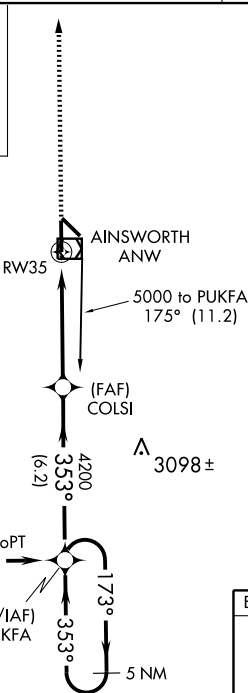
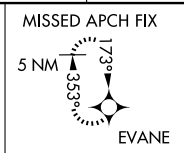
**MALSRL**  
  
**MISSED APPROACH:**  
 Climb to 5000  
 direct EVANE  
 and hold.

**▼** For inoperative MALSRL, increase LNAV/VNAV Cat D visibility to 1 mile. For uncompensated Baro-VNAV systems, LNAV/VNAV NA below -20°C (-4°F) or above 43°C (109°F).  
**▲** DME/DME RNP-0.3 NA. When local altimeter setting not received, use Valentine altimeter setting and increase all DA 70 feet and LNAV/VNAV visibility Cats A/B/C ¼ mile, increase all MDA 80 feet and LNAV Cat C and D visibility ¼ mile and circling Cat C visibility ¼ mile. Baro-VNAV and VDP NA when using Valentine altimeter setting.

AWOS-3  
**118.325**

DENVER CENTER  
**127.95 338.2**

UNICOM  
**122.8 (CTAF) 0**



CATEGORY	A	B	C	D
LNAV/VNAV DA	2909-½ 320 (400-½)			2909-¾ 320 (400-¾)
LNAV MDA	3160-½ 571 (600-½)		3160-1 571 (600-1)	3160-1¼ 571 (600-1¼)
CIRCLING	3160-1 571 (600-1)		3160-1½ 571 (600-1½)	3160-2 571 (600-2)

NC-2, 22 OCT 2009 to 19 NOV 2009

NC-2, 22 OCT 2009 to 19 NOV 2009