

RNAV (GPS) RWY 31

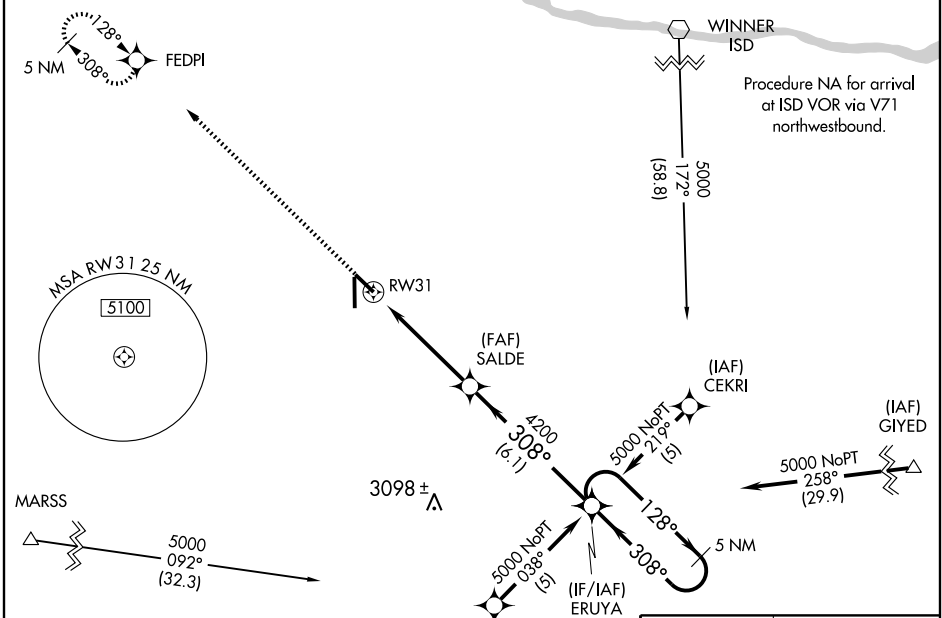
AINSWORTH MUNI (A.N.W)

WAAS CH 86507 W31A	APP CRS 308°	Rwy ldg 5501 TDZE 2585 Apt Elev 2589
--	------------------------	---

▼ For uncompensated BARO-VNAV systems, LNAV/VNAV NA below -20°C (-4°F) or above 43°C (109°F). DME/DME RNP-0.3 NA. When local altimeter setting not received, use Valentine altimeter setting and increase all DA 70 feet and LNAV/VNAV visibility ¼ mile all Cats, increase all MDA 80 feet, and LNAV Cat C and D visibility ¼ mile. Baro-VNAV and VDP NA with Valentine altimeter setting.

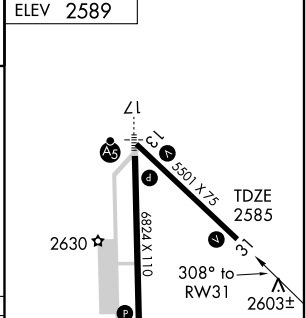
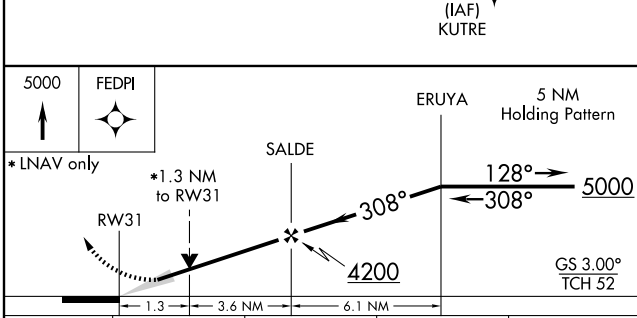
MISSED APPROACH:
Climb to 5000 direct
FEDPI and hold.

AWOS-3 118.325	DENVER CENTER 127.95 338.2	UNICOM 122.8 (CTAF) 0
--------------------------	--------------------------------------	---------------------------------



NC-2, 22 OCT 2009 to 19 NOV 2009

NC-2, 22 OCT 2009 to 19 NOV 2009



CATEGORY	A	B	C	D
LPV DA	2835-1 250 (300-1)			
LNAV/VNAV DA	2873-1 288 (300-1)			
LNAV MDA	3060-1 475 (500-1)	3060-1¼ 475 (500-1¼)	3060-1½ 475 (500-1½)	
CIRCLING	3060-1 471 (500-1)	3060-1½ 471 (500-1½)	3140-2 551 (600-2)	

