

RNAV (GPS) RWY 13

AINSWORTH MUNI (A.N.W)

WAAS CH 99706 W13A	APP CRS 128°	Rwy Idg TDZE 5501 2587 Apt Elev 2589
--	------------------------	--

⚠ For uncompensated Baro-VNAV systems, LNAV/VNAV NA below -20°C (-4°F) or above 43°C (109°F). DME/DME RNP-0.3 NA. When local altimeter setting not received, use Valentine altimeter setting and increase all DA 70 feet and LNAV/VNAV visibility ¼ mile all Cats, increase all MDA 80 feet and LNAV Cat D visibility ¼ mile. Baro-VNAV and VDP NA with Valentine altimeter setting.

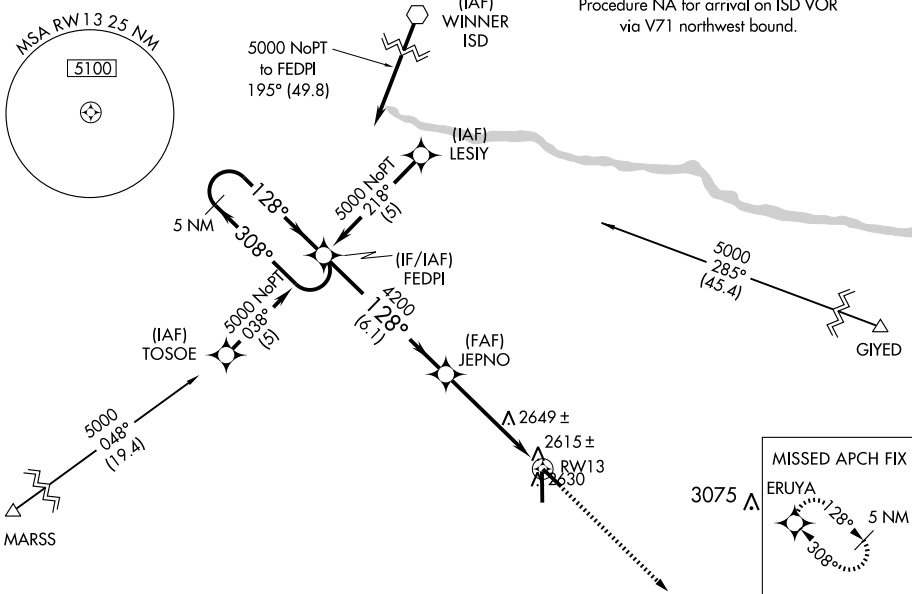
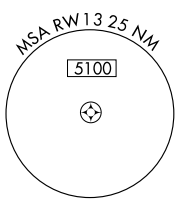
MISSED APPROACH:
Climb to 5000 direct ERUYA and hold.

AWOS-3
118.325

DENVER CENTER
127.95 338.2

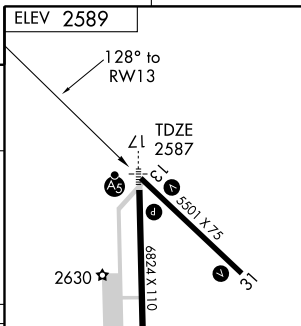
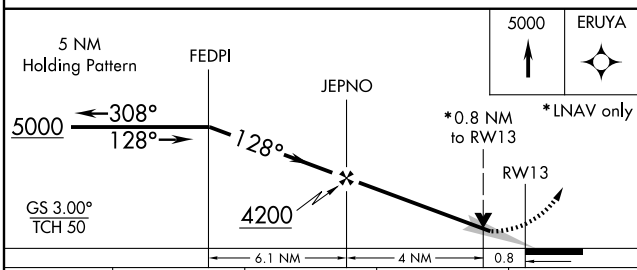
UNICOM
122.8 (CTAF) 0

Procedure NA for arrival on ISD VOR via V71 northwest bound.



NC-2, 22 OCT 2009 to 19 NOV 2009

NC-2, 22 OCT 2009 to 19 NOV 2009



CATEGORY	A	B	C	D
LPV DA		2837-1	250 (300-1)	
LNAV/VNAV DA		2885-1	298 (300-1)	
LNAV MDA		2900-1	313 (400-1)	
CIRCLING	3000-1 411 (500-1)	3040-1 451 (500-1)	3040-1½ 451 (500-1½)	3140-2 551 (600-2)

