

LE MARS, IOWA

AL-5679 (FAA)

VORTAC SUX <b>116.5</b> Chan <b>112</b>	APP CRS <b>004°</b>	Rwy Idg TDZE Apt Elev	<b>4305</b> <b>1196</b> <b>1196</b>
---	------------------------	-----------------------------	---

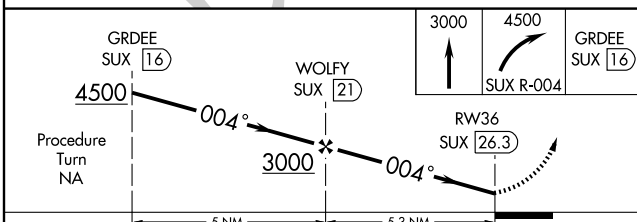
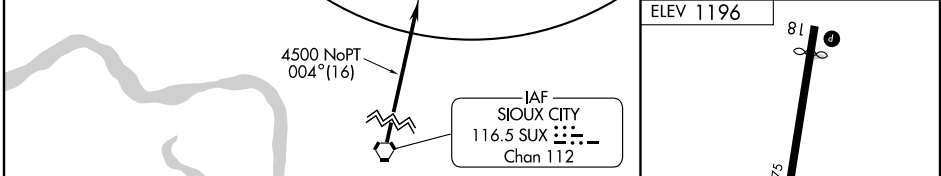
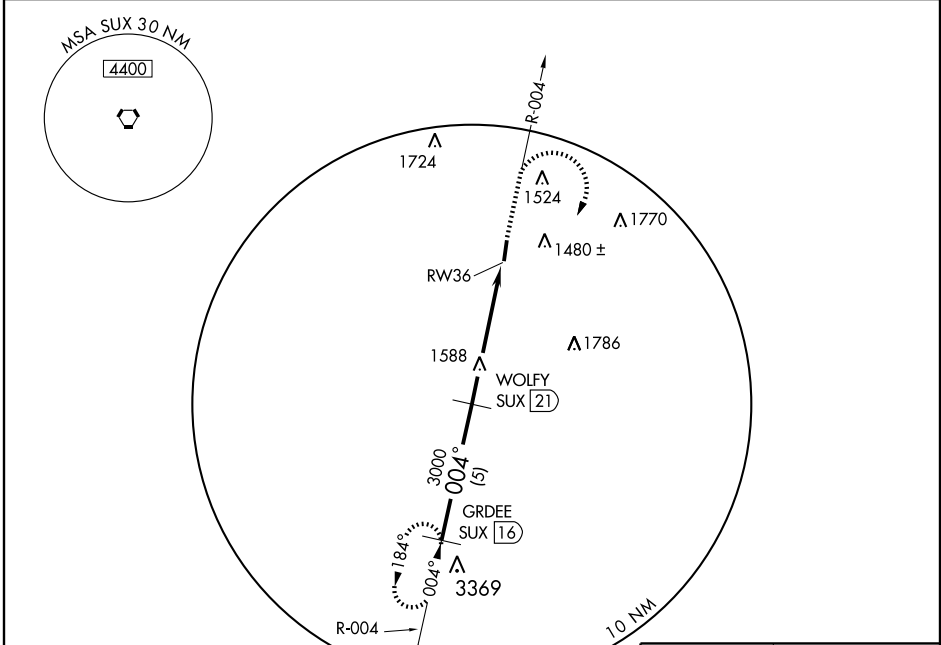
# VOR/DME or GPS RWY 36

LE MARS MUNI (L.R.J)

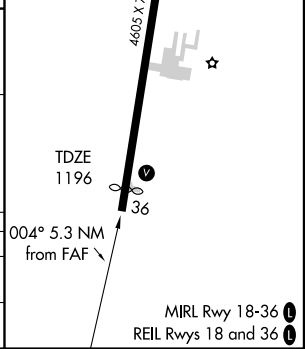
**▽**  
**▲**

MISSED APPROACH: Climb to 3000 then climbing right turn to 4500 via SUX R-004 to GRDEE and hold.

AWOS-3 <b>125.525</b>	SIoux CITY APP CON ★ <b>124.6 307.0</b>	UNICOM <b>122.8 (CTAF)</b>
--------------------------	--	-------------------------------



CATEGORY	A	B	C	D
S-36	2000-1 804 (900-1)	2000-1 ¼ 804 (900-1 ¼)		NA
CIRCLING	2000-1 804 (900-1)	2000-1 ¼ 804 (900-1 ¼)		NA



NC-3, 22 OCT 2009 to 19 NOV 2009

NC-3, 22 OCT 2009 to 19 NOV 2009

LE MARS, IOWA  
Amdt 2 09127

42°47'N - 96°12'W

# VOR/DME or GPS RWY 36

LE MARS MUNI (L.R.J)