

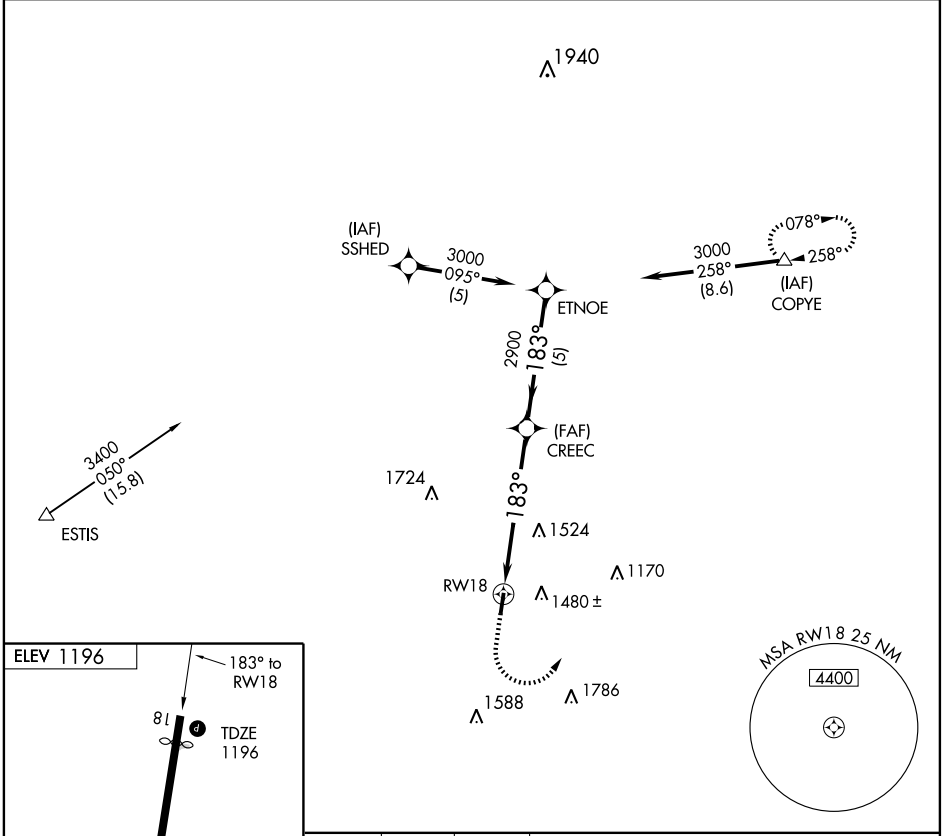
# GPS RWY 18

LE MARS MUNI (LRJ)

APP CRS	Rwy Idg	<b>4305</b>
<b>183°</b>	TDZE	<b>1196</b>
	Apt Elev	<b>1196</b>

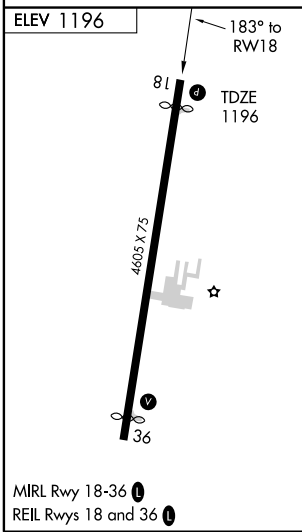
MISSED APPROACH: Climb to 2500, then climbing left turn to 3000 direct COPYE WP and hold.

	NA	
AWOS-3 <b>125.525</b>	SIOUX CITY APP CON * <b>124.6 307.0</b>	UNICOM <b>122.8 (CTAF) 0</b>



NC-3, 22 OCT 2009 to 19 NOV 2009

NC-3, 22 OCT 2009 to 19 NOV 2009



2500	3000	COPYE	
↑	↶	△	
RWY18	CREEC	ETNOE	3000
183°	183°	183°	Procedure Turn NA
6 NM	5 NM		
CATEGORY	A	B	C D
S-18	1760-1 564 (600-1)		NA
CIRCLING	1760-1 564 (600-1)	1840-1 644 (700-1)	NA