

DECORAH, IOWA

AL-5678 (FAA)

APP CRS	Rwy Idg	<b>4001</b>
<b>294°</b>	TDZE	<b>1158</b>
	Apt Elev	<b>1158</b>

# RNAV (GPS) RWY 29

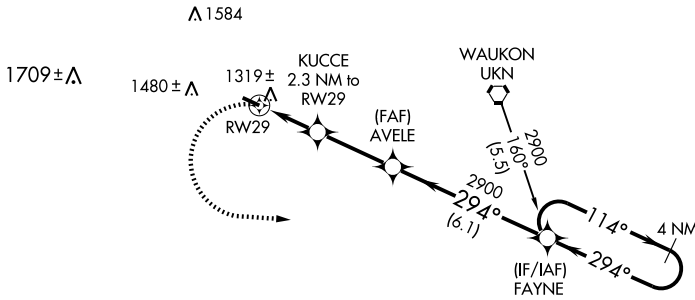
DECORAH MUNI (DEH)

**⚠** DME/DME RNP -0.3 NA.  
**⚠** When local altimeter setting not received, use Preston, MN altimeter setting and increase all MDAs 100 feet.  
 VDP NA when using Preston, MN altimeter setting.

MISSED APPROACH: Climbing left turn to 2900 direct FAYNE and hold.

AWOS-3 <b>120.925</b>	MINNEAPOLIS CENTER <b>118.85</b>	UNICOM <b>122.8</b> (CTAF) <b>0</b>
--------------------------	-------------------------------------	--

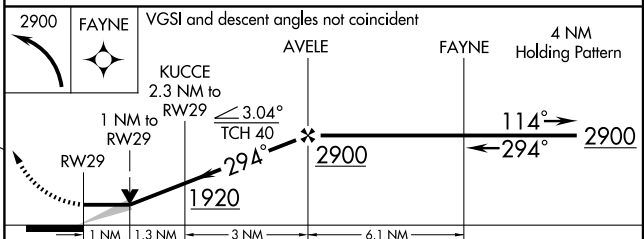
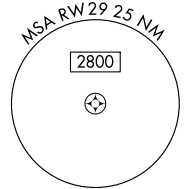
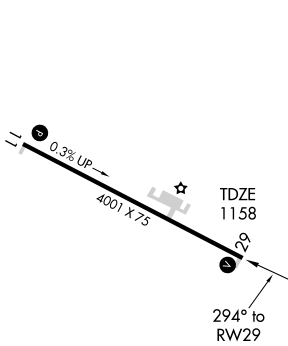
Procedure NA for arrivals on UKN VORTAC radials 116 CW 216.



NC-3, 22 OCT 2009 to 19 NOV 2009

NC-3, 22 OCT 2009 to 19 NOV 2009

ELEV 1158



CATEGORY	A	B	C	D
LNAV MDA	1580-1	422 (500-1)	NA	
CIRCLING	1620-1	462 (500-1)	NA	

REIL Rws 11 and 29 **0**  
 MIRL Rwy 11-29 **0**

DECORAH, IOWA  
 Orig-A 09127

43°17'N-91°44'W

# RNAV (GPS) RWY 29