

VORTAC GLL <b>114.2</b> Chan 89	APP CRS <b>248°</b>	Rwy Idg TDZE Apt Elev <b>N/A</b> <b>N/A</b> <b>5016</b>
---------------------------------------	------------------------	--

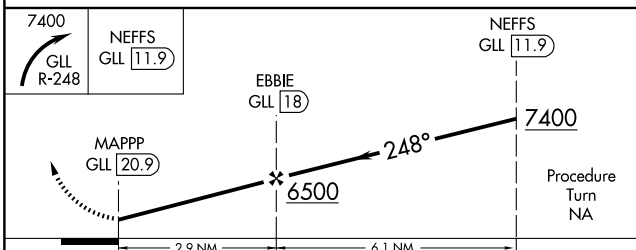
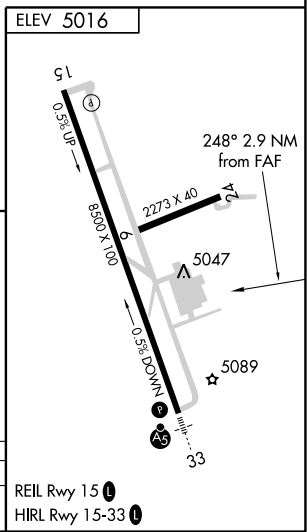
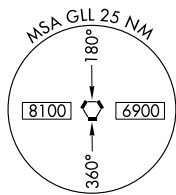
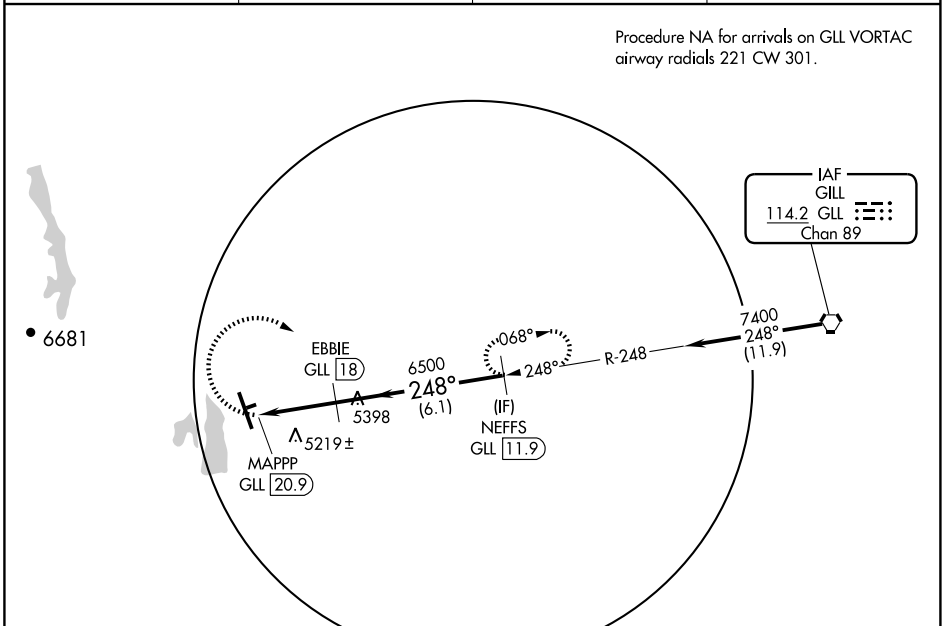
**VOR/DME-A**  
FORT COLLINS-LOVELAND MUNI (FNL)

**▼** Circling to Rwy 6/24 NA at night.  
**▲** When local altimeter setting not received, use Denver Intl altimeter setting and increase all MDA 160 feet and Cat C/D visibility ¼ mile.

MISSED APPROACH: Climbing right turn to 7400 via GLL VORTAC R-248 to NEFFS/GLL 11.9 DME and hold.

AWOS-3 <b>135.075</b>	DENVER APP CON <b>134.85 251.125</b>	CLNC DEL <b>120.25</b>	UNICOM <b>122.7 (CTAF) 0</b>
--------------------------	---	---------------------------	---------------------------------

Procedure NA for arrivals on GLL VORTAC airway radials 221 CW 301.



CATEGORY	A	B	C	D
CIRCLING	5500-1 484 (500-1)	5500-1¼ 484 (500-1¼)	5520-1½ 504 (600-1½)	5580-2 564 (600-2)

REIL Rwy 15 0  
HIRL Rwy 15-33 0

SW-1, 22 OCT 2009 to 19 NOV 2009

SW-1, 22 OCT 2009 to 19 NOV 2009