


RNAV (GPS) RWY 33

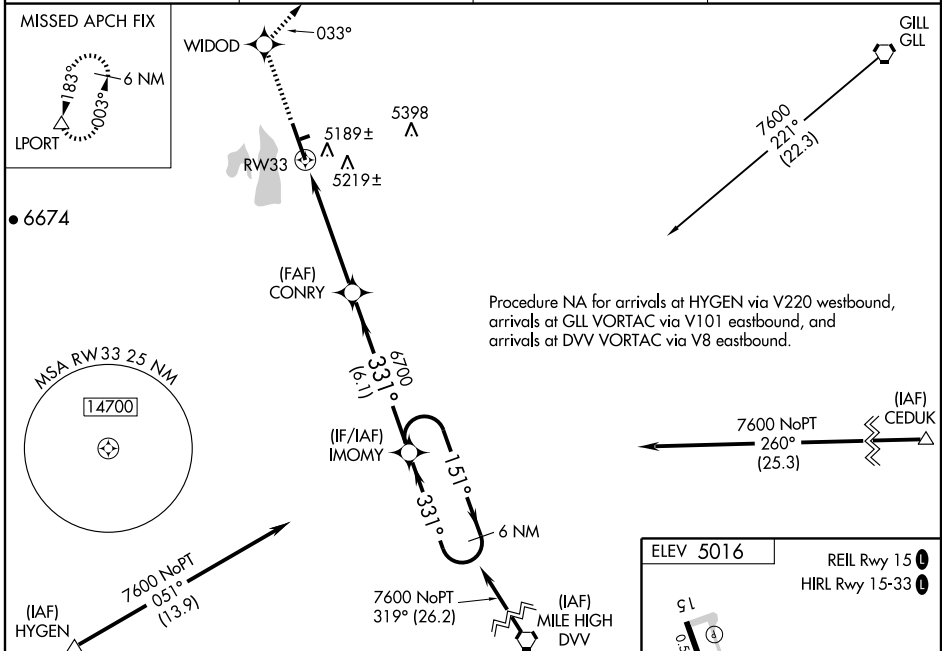
FORT COLLINS-LOVELAND MUNI (FNL)

WAAS CH 97511 W33A	APP CRS 331°	Rwy Idg 8500 TDZE 5016 Apt Elev 5016
--	------------------------	---

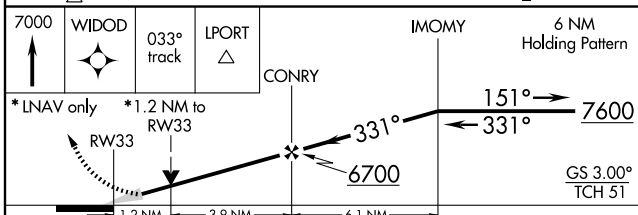
▼ Circling to Rwy 6/24 NA at night.
▲ For inoperative MALS/R, increase LNAV Cat D visibility to 1 1/4 mile.
 For uncompensated Baro-VNAV systems, LNAV/VNAV NA below -25°C (-13°F) or above 39°C (102°F).
 VDP and Baro-VNAV NA when using Denver Intl altimeter setting.
 For inoperative MALS/R when using Denver Intl altimeter setting, increase visibility all Cats 1/2 mile.
 When local altimeter setting not received, use Denver Intl altimeter setting and increase DA 147 feet and MDA 160 feet. Increase LPV visibility all Cats 1/2 mile, LNAV/VNAV all Cats 1/2 mile, LNAV and Circling Cat C/D 1/4 mile.

MALS/R

MISSED APPROACH: Climb to 7000 direct WIDOD and via 033° track to LPORT and hold. When authorized by ATC, climb-in-hold to 8000.

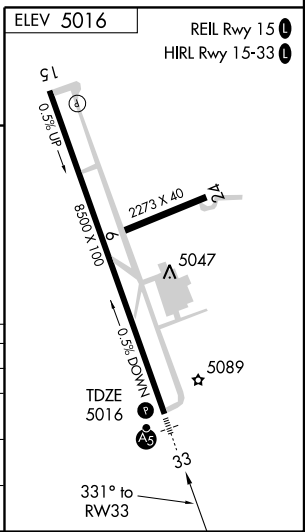
AWOS-3 135.075	DENVER APP CON 134.85 251.125	CLNC DEL 120.25	UNICOM 122.7 (CTAF)
--------------------------	---	---------------------------	-------------------------------



Procedure NA for arrivals at HYGEM via V220 westbound, arrivals at GLL VORTAC via V101 eastbound, and arrivals at DVV VORTAC via V8 eastbound.



CATEGORY	A	B	C	D
LPV DA		5216-1/2	200 (200-1/2)	
LNAV/VNAV DA		5489-1/4	473 (500-1/4)	
LNAV MDA	5440-1/2 424 (500-1/2)		5440-3/4 424 (500-3/4)	5440-1 424 (500-1)
CIRCLING	5500-1 484 (500-1)		5520-1/2 504 (600-1/2)	5580-2 564 (600-2)



SW-1, 22 OCT 2009 to 19 NOV 2009

SW-1, 22 OCT 2009 to 19 NOV 2009