

# RNAV (GPS) RWY 15

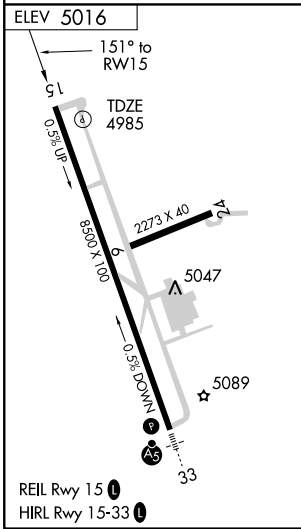
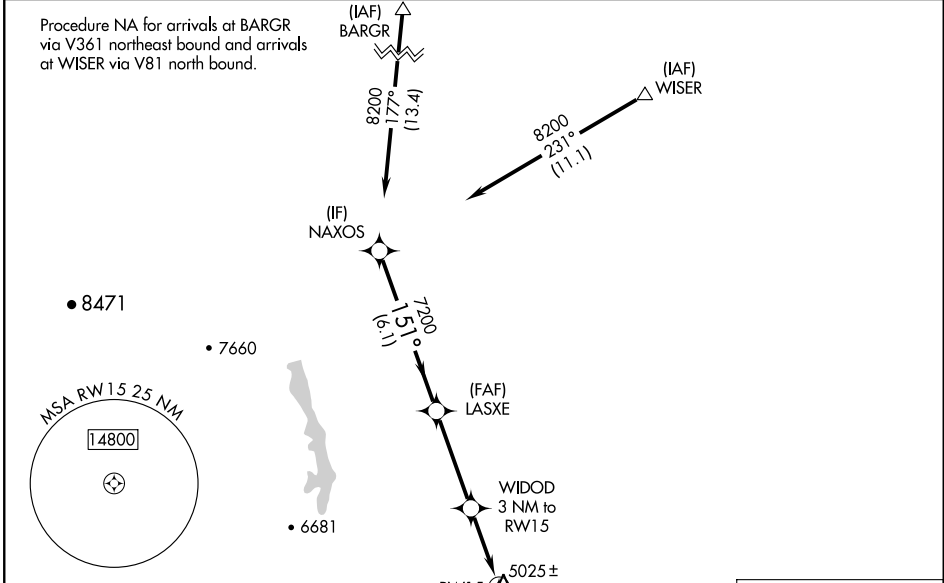
FORT COLLINS-LOVELAND MUNI (FNL)

APP CRS <b>151°</b>	Rwy Idg <b>8500</b>
	TDZE <b>4985</b>
	Apt Elev <b>5016</b>

**▼** Circling to Rwy 6/24 NA at night.  
**▲** DME/DME RNP- 0.3 NA.  
**▲** VDP NA when using Denver Intl altimeter setting.  
 When local altimeter setting not received, use Denver Intl altimeter setting and increase all MDA 160 feet and increase LNAV Cat C visibility ¼ mile, Cat D ½ mile, and Circling Cat C/D visibility ¼ mile.

MISSED APPROACH: Climb to 7600 direct IMOMY and hold.

AWOS-3 <b>135.075</b>	DENVER APP CON <b>134.85 251.125</b>	CLNC DEL <b>120.25</b>	UNICOM <b>122.7 (CTAF) 0</b>
--------------------------	---	---------------------------	---------------------------------



NAXOS LASXE WIDOD 3 NM to RW15 RW15 IMOMY 6 NM	7600	IMOMY		
	Procedure Turn NA 8200 7200 5980 6.1 NM 3.7 NM 2.2 NM 0.8 NM	151° 3.06° TCH 50 0.8 NM to RW15	RW15 RW15	
CATEGORY	A	B	C	D
LNAV MDA	5280-1 295 (300-1)			
CIRCLING	5500-1 484 (500-1)	5520-1½ 504 (600-1½)	5580-2 564 (600-2)	

SW-1, 22 OCT 2009 to 19 NOV 2009

SW-1, 22 OCT 2009 to 19 NOV 2009