


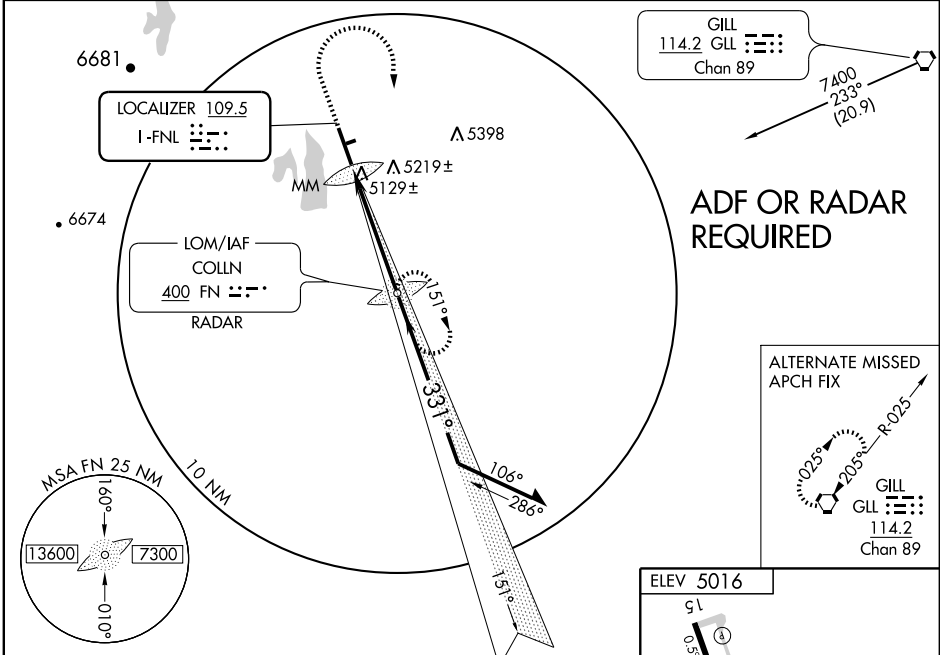
ILS or LOC RWY 33
 FORT COLLINS-LOVELAND MUNI (FNL)

LOC I-FNL 109.5	APP CRS 331°	Rwy Idg 8500
		TDZE 5016
		Apt Elev 5016

⚠ Circling to Rwy 6/24 NA at night. ADF or RADAR required.
⚠ NA When local altimeter setting not received, use Denver Infil altimeter setting and increase DA 147 feet and all MDA 160 feet. Increase S-ILS 33 visibility all Cats ¼ mile, S-LOC 33 Cat C/D visibility ½ mile, and Circling Cat C/D visibility ¼ mile. For inoperative MALSR, when using Denver Infil altimeter setting increase S-ILS 33 visibility all Cats to ½ mile.

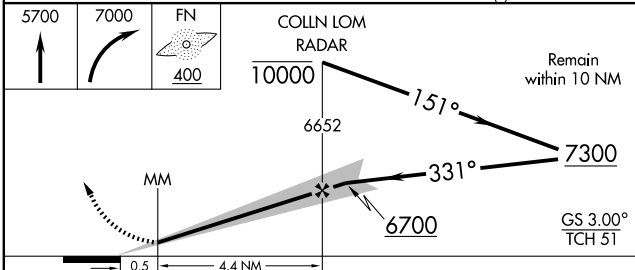
MALSR
 MISSED APPROACH: Climb to 5700 then climbing right turn to 7000 direct COLLN LOM and hold.

AWOS-3 135.075	DENVER APP CON 134.85 251.125	CINC DEL 120.25	UNICOM 122.7 (CTAF) 0
--------------------------	---	---------------------------	---------------------------------



SW-1, 22 OCT 2009 to 19 NOV 2009

SW-1, 22 OCT 2009 to 19 NOV 2009



CATEGORY	A	B	C	D
S-ILS 33	5216-½ 200 (200-½)			
S-LOC 33	5380-½ 364 (400-½)		5380-¾ 364 (400-¾)	
CIRCLING	5500-1 484 (500-1)	5520-½ 504 (600-½)	5580-2 564 (600-2)	

