

RNAV (GPS) RWY 29

QUAKERTOWN (UKT)

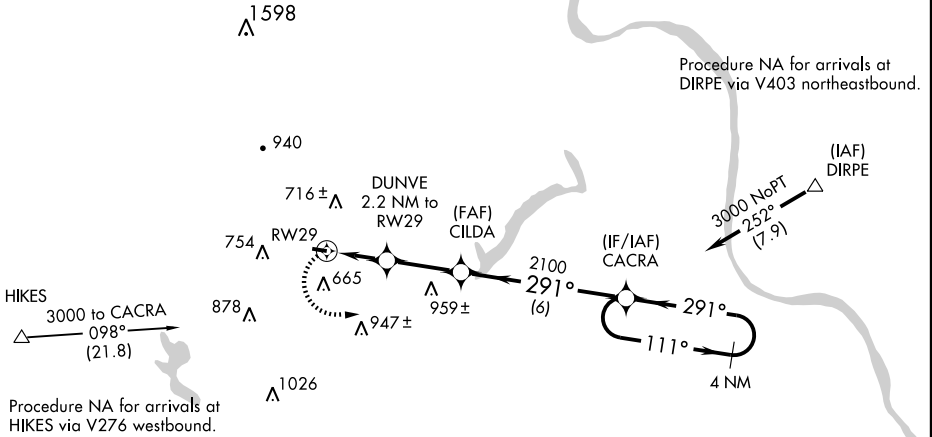
APP CRS 291°	Rwy Idg TDZE Apt Elev	3201 526 526
------------------------	-----------------------------	---

- ▼ GPS or RNP-0.3 required. DME/DME RNP-0.3 NA.
- ▲ If local altimeter setting not received, use Pennridge altimeter setting.

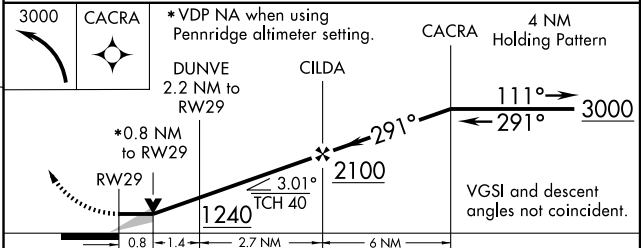
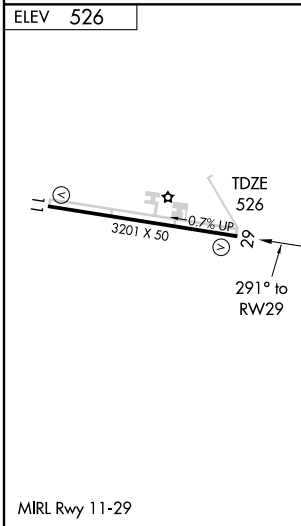
MISSED APPROACH: Climbing left turn to 3000 direct CACRA WP and hold.

QUAKERTOWN AWOS-3 119.475	PENNRIDGE AWOS-3 126.325	PHILADELPHIA APP CON 123.8 291.7	CLNC DEL 118.55	UNICOM 122.725 (CTAF)
--	---------------------------------------	--	---------------------------	---------------------------------

NE-4, 22 OCT 2009 to 19 NOV 2009



NE-4, 22 OCT 2009 to 19 NOV 2009



CATEGORY	A	B	C	D
LNAV MDA	960-1	434 (500-1)	960-1½ 434 (500-1½)	NA
CIRCLING	1000-1	474 (500-1)	1000-1½ 474 (500-1½)	NA