

MONTECELLO, NEW YORK

AL-5675 (FAA)

VOR/DME RWY 33

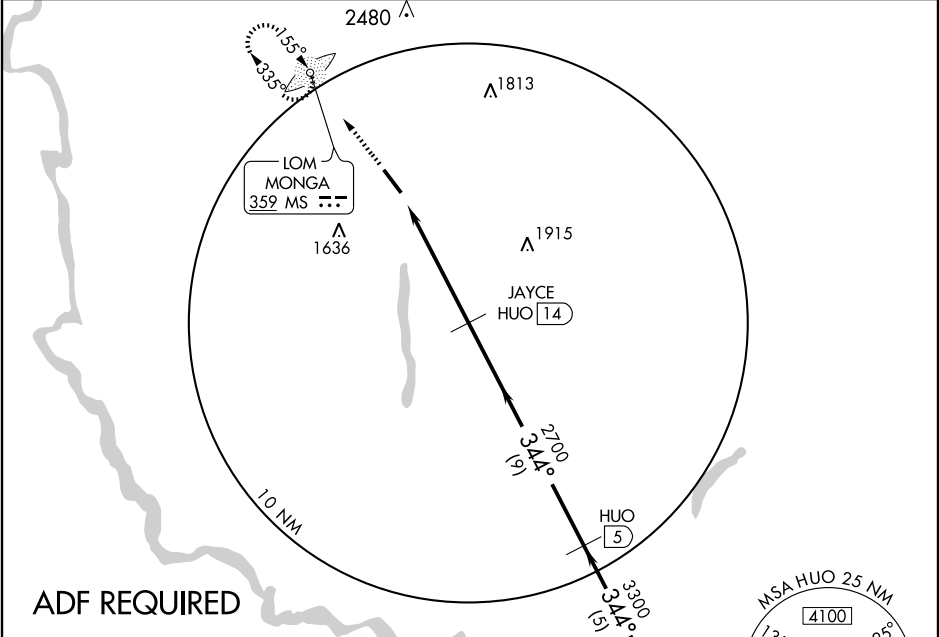
MONTECELLO/SULLIVAN COUNTY INTL (MSV)

VOR/DME H ^{UO}	APP CRS	Rwy Ldg	5700
116.1	344°	TDZE	1390
Chan 108		Apt Elev	1403

⚠ If local altimeter setting not received, use Newburgh/Stewart Intl altimeter setting and increase all MDAs 160 feet.

MISSED APPROACH: Climb to 4000 direct MS LOM and hold.

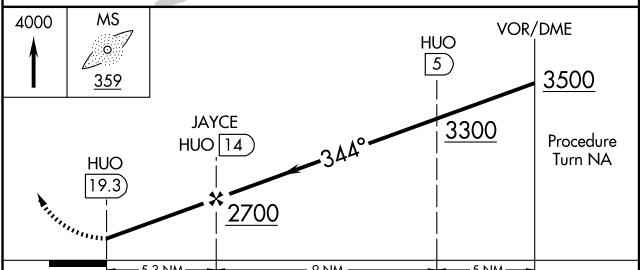
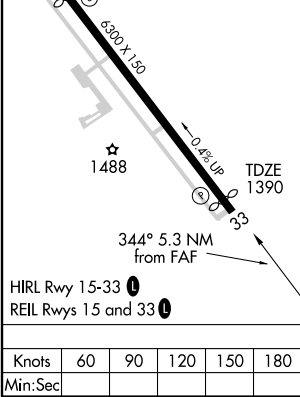
AWOS-3	NEW YORK APP CON	CLNC DEL	UNICOM
124.725	132.75 363.1	121.6	122.8 (CTAF) 📞



NE-2, 22 OCT 2009 to 19 NOV 2009

NE-2, 22 OCT 2009 to 19 NOV 2009

ELEV 1403	D
-----------	----------



CATEGORY	A	B	C	D
S-33	1980-1 590 (600-1)		1980-1½ 590 (600-1½)	1980-1¾ 590 (600-1¾)
CIRCLING	1980-1 577 (600-1)		1980-1½ 577 (600-1½)	1980-2 577 (600-2)

MONTECELLO, NEW YORK
Amdt 3 09295

MONTECELLO/SULLIVAN COUNTY INTL (MSV)

41°42'N - 74°48'W

VOR/DME RWY 33