

MONTICELLO, NEW YORK

AL-5675 (FAA)

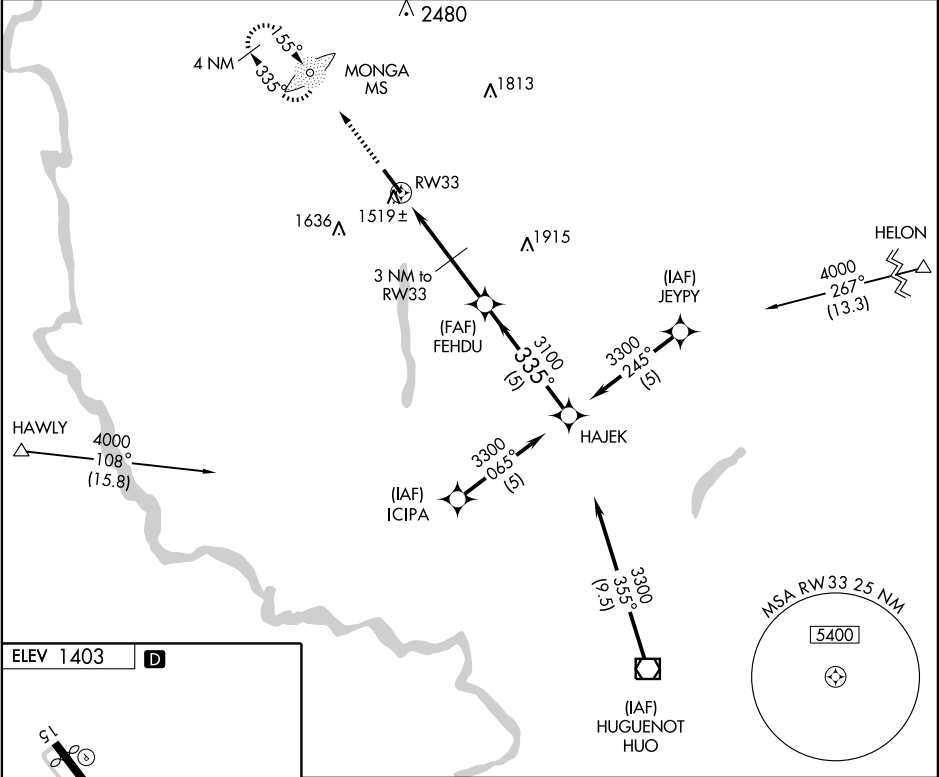
RNAV (GPS) RWY 33

MONTICELLO/SULLIVAN COUNTY INTL (MSV)

APP CRS 335°	Rwy Ldg TDZE Apt Elev	5700 1390 1403
------------------------	-----------------------------	---

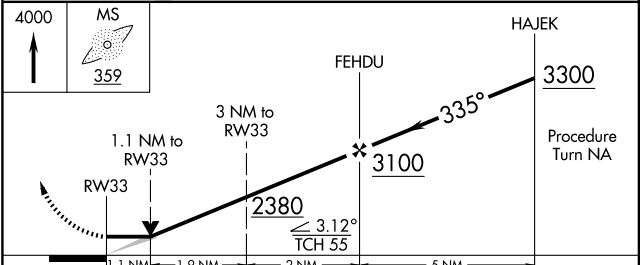
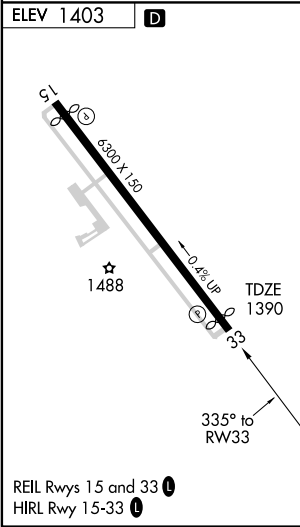
<p>GPS or RNP-0.3 required.</p> <p>NA</p>	<p>MISSED APPROACH: Climb to 4000 direct MONGA LOM and hold.</p>
---	--

AWOS-3 124.725	NEW YORK APP CON 132.75 363.1	CLNC DEL 121.6	UNICOM 122.8 (CTAF) 0
--------------------------	--	--------------------------	--



NE-2, 22 OCT 2009 to 19 NOV 2009

NE-2, 22 OCT 2009 to 19 NOV 2009



CATEGORY	A	B	C	D
LNAV MDA	1780-1 390 (400-1)			1780-1½ 390 (400-1¼)
CIRCLING	1900-1 497 (500-1)		1900-1½ 497 (500-1½)	1960-2 557 (600-2)

MONTICELLO, NEW YORK
Orig 09295

MONTICELLO/ SULLIVAN COUNTY INTL (MSV)

41°42'N - 74°48'W

RNAV (GPS) RWY 33