

MONTECELLO, NEW YORK

AL-5675 (FAA)

NDB or GPS RWY 15

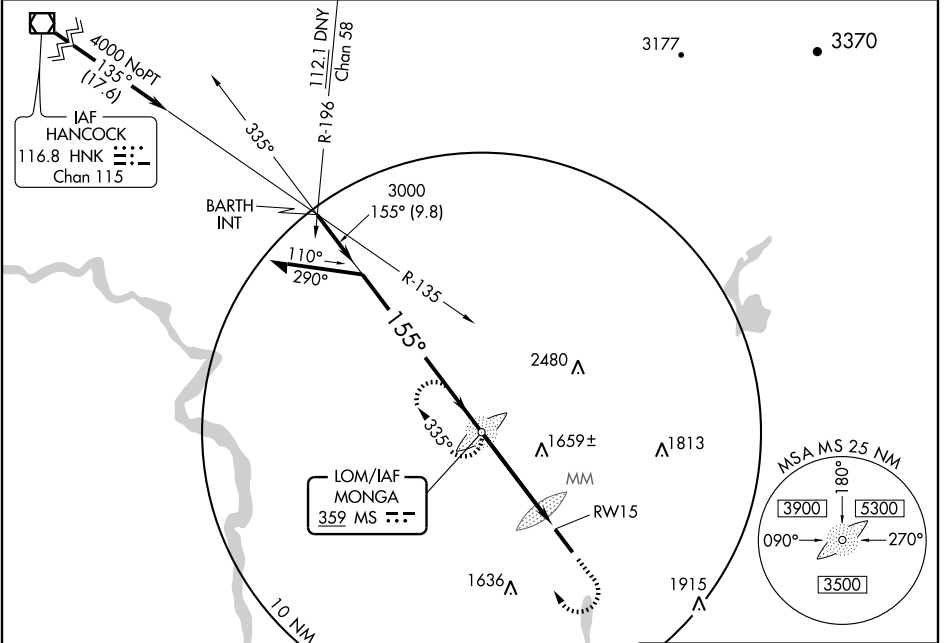
MONTECELLO / SULLIVAN COUNTY INTL (MSV)

LOM MS 359	APP CRS 155°	Rwy Ldg TDZE Apt Elev	5700 1403 1403
----------------------	------------------------	-----------------------------	---

▽
▲ NA

MISSED APPROACH: Climb to 2500, then climbing right turn to 4000 direct MS LOM and hold.

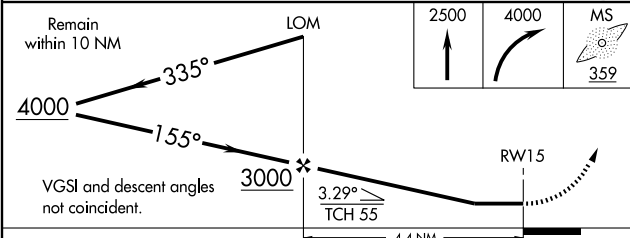
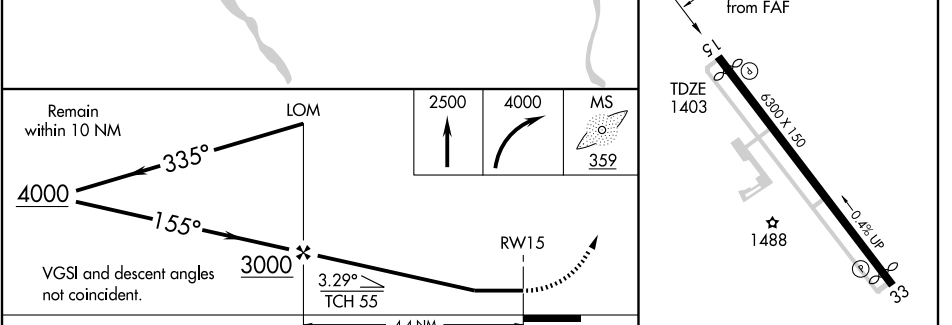
AWOS-3 124.725	NEW YORK APP CON 132.75 363.1	CLNC DEL 121.6	UNICOM 122.8 (CTAF) ①
--------------------------	---	--------------------------	--



NE-2, 22 OCT 2009 to 19 NOV 2009

NE-2, 22 OCT 2009 to 19 NOV 2009

ELEV 1403 D



CATEGORY	A	B	C	D
S-15	1960-1 557 (600-1)	1960-1½ 557 (600-1½)	1960-1¾ 557 (600-1¾)	1960-2 557 (600-2)
CIRCLING	1960-1 557 (600-1)	1960-1½ 557 (600-1½)	1960-1¾ 557 (600-1¾)	1960-2 557 (600-2)

REIL Rwy 15 and 33 ①					
HIRL Rwy 15-33 ①					
FAF to MAP 4.4 NM					
Knots	60	90	120	150	180
Min:Sec	4:24	2:56	2:12	1:46	1:28

MONTECELLO, NEW YORK
Amdt 6A 09295

MONTECELLO / SULLIVAN COUNTY INTL (MSV)

41°42'N - 74°48'W

NDB or GPS RWY 15