

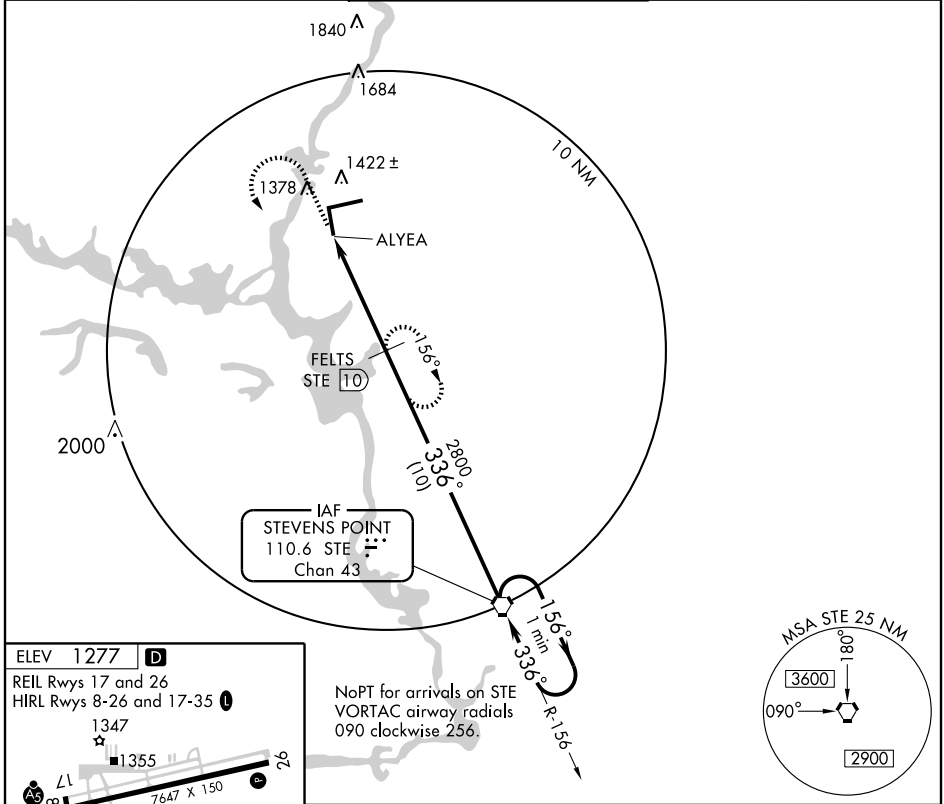
VORTAC STE	APP CRS	Rwy ldg	<b>6500</b>
<b>110.6</b>	<b>336°</b>	TDZE	<b>1256</b>
Chan <b>43</b>		Apt Elev	<b>1277</b>

# VOR/DME RWY 35

MOSINEE/CENTRAL WISCONSIN (CWA)

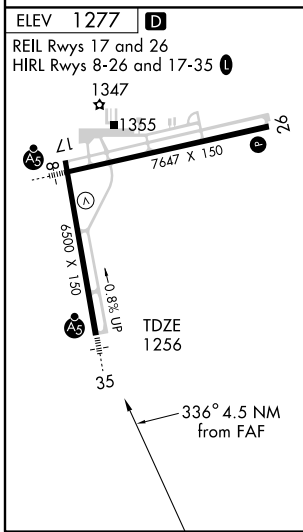
	MISSED APPROACH: Climb to 1700 then climbing left turn to 2800 via STE R-336 to FELTS and hold.			

ATIS <b>127.45</b>	MINNEAPOLIS CENTER <b>124.4 317.7</b>	CWA TOWER ★ <b>119.75 (CTAF) 360.7</b>	GND CON <b>121.9 360.7</b>	UNICOM <b>122.95</b>
-----------------------	------------------------------------------	-------------------------------------------	-------------------------------	-------------------------



EC-3, 22 OCT 2009 to 19 NOV 2009

EC-3, 22 OCT 2009 to 19 NOV 2009



NoPT for arrivals on STE VORTAC airway radials 090 clockwise 256.

1700	2800	FELTS STE 10	FELTS STE 10	One Minute Holding Pattern
↑	STE R-336 110.6			VORTAC
	ALYEA STE 14.5	STE 13.6	2800	2800
		3.17°	336°	156°
		TCH 45	← 336°	→ 156°
	1 NM	3.6 NM	10 NM	
CATEGORY	A	B	C	D
S-35	1600-1 344 (400-1)			1600-1½ 344 (400-1½)
CIRCLING	1740-1	463 (500-1)	1740-1½ 463 (500-1½)	1840-2 563 (600-2)