

# RNAV (GPS) RWY 17

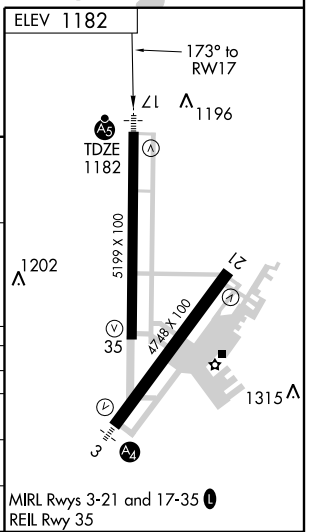
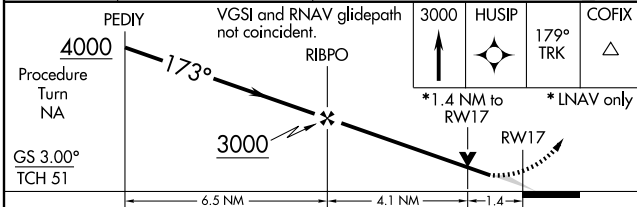
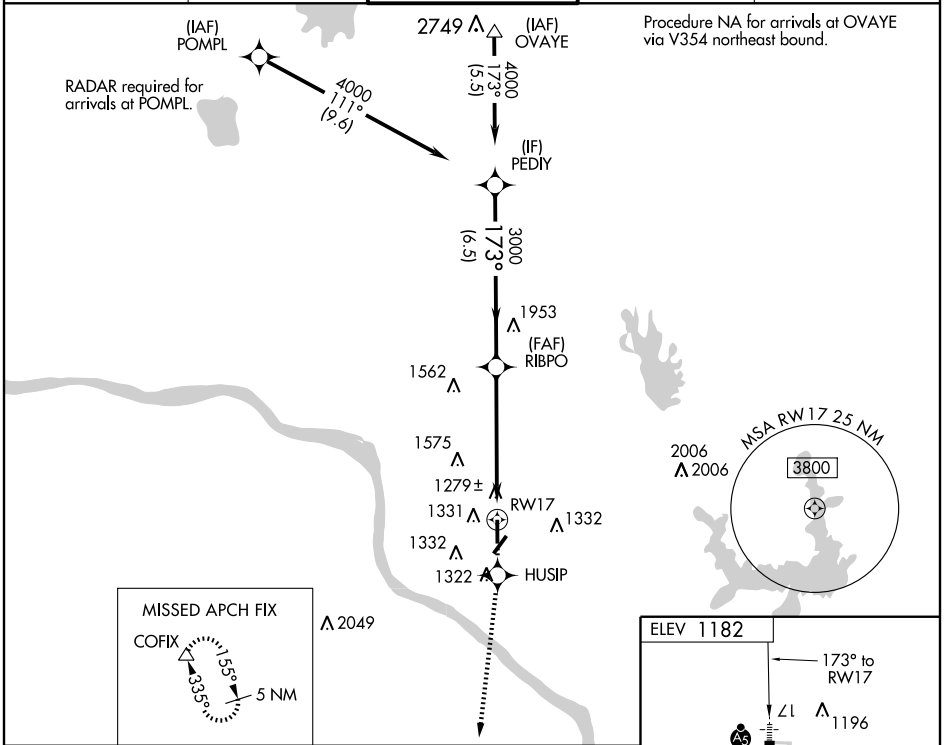
NORMAN/ UNIVERSITY OF OKLAHOMA WESTHEIMER (OUN)

WAAS CH <b>58302</b> <b>W17A</b>	APP CRS <b>173°</b>	Rwy Idg <b>5199</b> TDZE <b>1182</b> Apt Elev <b>1182</b>
--	------------------------	---

▼ If local altimeter setting not received, use Will Rogers altimeter setting and increase all DAs 41 feet, increase all MDAs 60 feet. BARO-VNAV NA when using Will Rogers altimeter setting.  
 ▲ For uncompensated BARO-VNAV systems, LNAV/VNAV NA below -17°C (2°F) or above 46°C (116°F). VDP NA when using Will Rogers altimeter setting. Circling NA southeast of Rwy 3-21. DME/DME RNP-0.3 NA. For inoperative MALSR, increase LPV all Cats visibility to 1.

MALSR MISSED APPROACH:  
 Climb to 3000 direct HUSIP and via 179° track to COFIX and hold.

AWOS-3 <b>119.55</b>	OKE CITY APP CON <b>120.45 288.325</b>	WESTHEIMER TOWER* <b>118.0</b> (CTAF)	GND CON <b>121.6</b>	UNICOM <b>122.95</b>
-------------------------	---	--	-------------------------	-------------------------



CATEGORY	A	B	C	D
LPV DA	1506-1/2		324 (400-1/2)	
LNAV/DA VNAV	1552-3/4		370 (400-3/4)	
LNAV MDA	1720-1/2 538 (600-1/2)		1720-1 538 (600-1) 1720-1 1/4 538 (600-1 1/4)	
CIRCLING	1720-1 538 (600-1)		1720-1 1/2 538 (600-1 1/2) 1740-2 558 (600-2)	

# RNAV (GPS) RWY 17

SC-1, 22 OCT 2009 to 19 NOV 2009

SC-1, 22 OCT 2009 to 19 NOV 2009