

NORMAN, OKLAHOMA

AL-5672 (FAA)

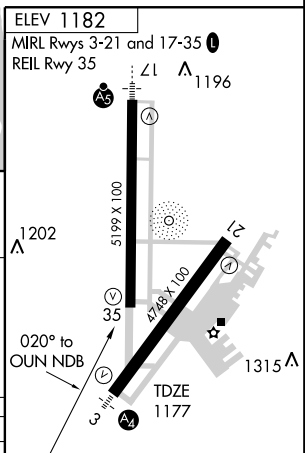
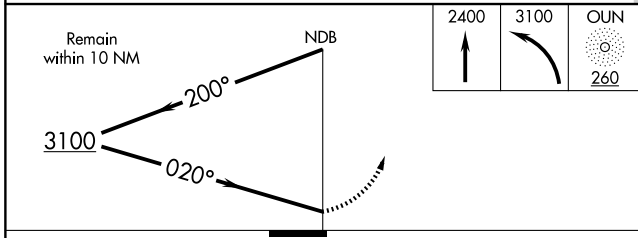
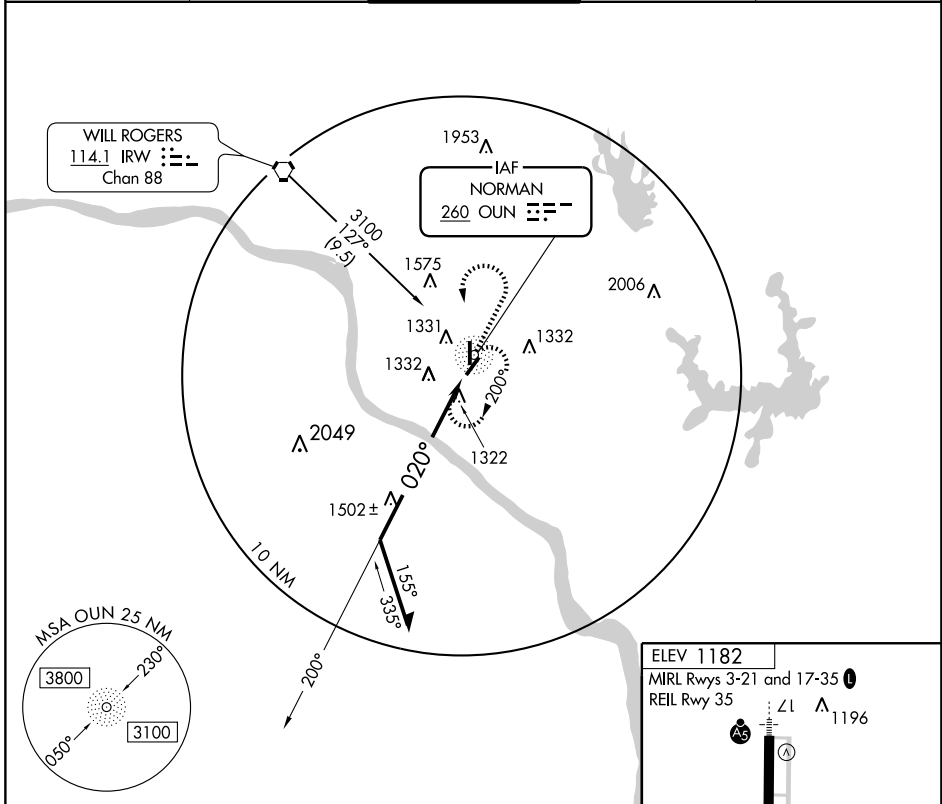
NDB RWY 3

NORMAN/ UNIVERSITY OF OKLAHOMA WESTHEIMER (OUN)

NDB OUN 260	APP CRS 020°	Rwy Idg 4748
		TDZE 1177
		Apt Elev 1182

<p>▼ If local altimeter setting not received, use Will Rogers altimeter setting and increase all MDAs 60 feet. Circling NA southeast of Rwy 3-21. Inoperative table does not apply to Cat C. Visibility reduction by helicopters NA.</p>	<p>MALS A2</p>	<p>MISSED APPROACH: Climb to 2400 then climbing left turn to 3100 direct OUN NDB and hold.</p>
--	--------------------	--

<p>AWOS-3 119.55</p>	<p>OKE CITY APP CON 120.45 288.325</p>	<p>WESTHEIMER TOWER* 118.0 (CTAF)</p>	<p>GND CON 121.6</p>	<p>UNICOM 122.95</p>
---------------------------------	---	--	---------------------------------	---------------------------------



CATEGORY	A	B	C	D
S-3	1860-3/4 683 (700-3/4)		1860-2 683 (700-2)	1860-2 1/4 683 (700-2 1/4)
CIRCLING	1860-1 678 (700-1)		1860-2 678 (700-2)	1860-2 1/4 678 (700-2 1/4)

Knots	60	90	120	150	180
Min:Sec					

NORMAN, OKLAHOMA
Amdt 1 08325

NORMAN/ UNIVERSITY OF OKLAHOMA WESTHEIMER (OUN)
35° 15' N-97° 28' W

NDB RWY 3

SC-1, 22 OCT 2009 to 19 NOV 2009

SC-1, 22 OCT 2009 to 19 NOV 2009