

# LOC RWY 3

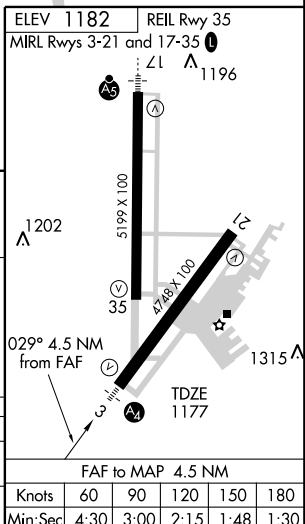
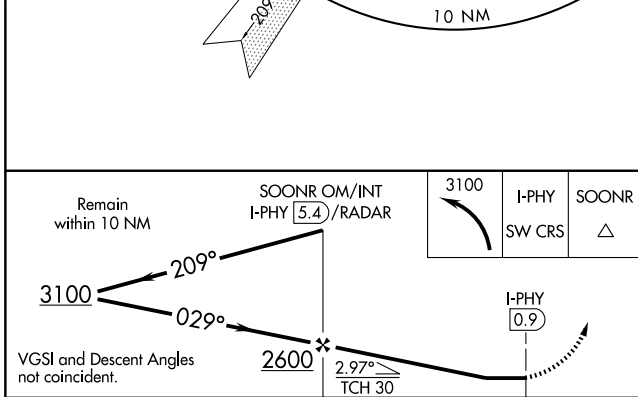
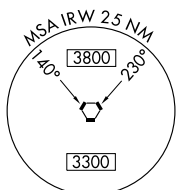
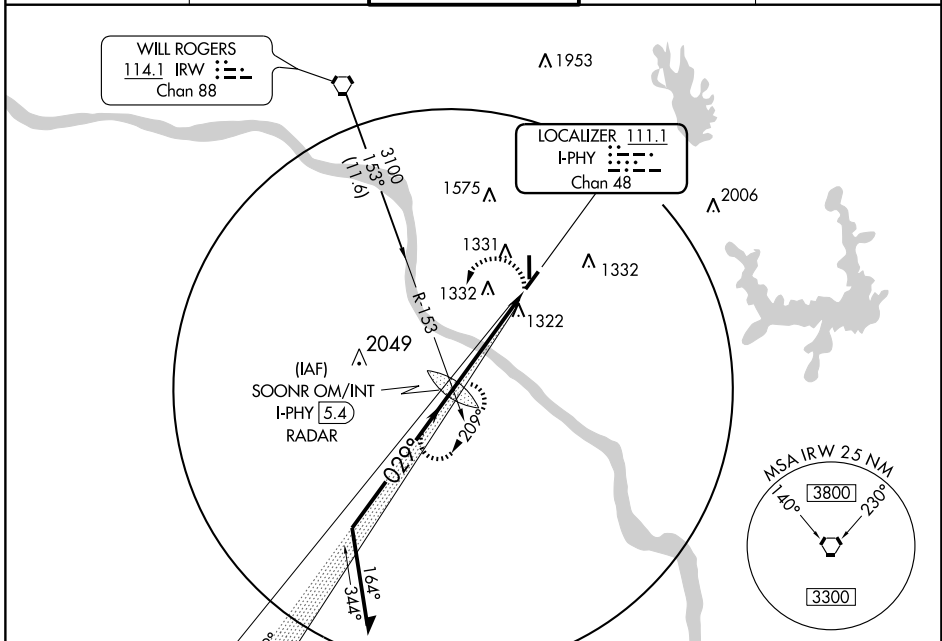
NORMAN/ UNIVERSITY OF OKLAHOMA WESTHEIMER (OUN)

LOC I-PHY <b>111.1</b> Chan <b>48</b>	APP CRS <b>029°</b>	Rwy Idg <b>4748</b> TDZE <b>1177</b> Apt Elev <b>1182</b>
---	------------------------	---

**▼** If local altimeter setting not received, use Will Rogers altimeter setting and increase all MDAs 60 feet. Inoperative table does not apply to Cat. C. Circling not authorized southeast of Rwy 3-21.

**MALS** **AV** **—** **—** **—**  
**MISSED APPROACH:** Climbing left turn to 3100 via I-PHY SW course to SOONR Int and hold.

AWOS-3 <b>119.55</b>	OKE CITY APP CON <b>120.45 288.325</b>	WESTHEIMER TOWER* <b>118.0 (CTAF)</b> <b>0</b>	GND CON <b>121.6</b>	UNICOM <b>122.95</b>
-------------------------	---	---	-------------------------	-------------------------



CATEGORY	A	B	C	D
S-3	1580- <sup>3</sup> / <sub>4</sub>	403 (400- <sup>3</sup> / <sub>4</sub> )	1580-1 <sup>1</sup> / <sub>4</sub>	403 (400-1 <sup>1</sup> / <sub>4</sub> )
CIRCLING	1640-1 458 (500-1)	1660-1 478 (500-1)	1660-1 <sup>1</sup> / <sub>2</sub> 478 (500-1 <sup>1</sup> / <sub>2</sub> )	1740-2 559 (600-2)

FAF to MAP 4.5 NM					
Knots	60	90	120	150	180
Min:Sec	4:30	3:00	2:15	1:48	1:30

# LOC RWY 3

SC-1, 22 OCT 2009 to 19 NOV 2009

SC-1, 22 OCT 2009 to 19 NOV 2009